

# Searching for former settlements in the mountains of Taiwan: An indigenous archaeological study incorporating Bunun traditional values and modern technology

NCKU-EFEO International Conference  
Indigenous Archaeology and Cultural Heritage  
in Asia-Pacific



Chieh-fu Jeff Cheng,  
Research Center for Humanities and Social Sciences, National Taiwan University



## ❖ Indigenous Archaeology

- ❖ “Archaeology done with, for and by indigenous people (Nicholas and Andrews 1997:3)”
- ❖ Considered a decolonizing archaeological practice, seeking to understand the history and heritage by incorporating archaeology and the indigenous knowledge, value, and epistemologies, through a collaborative approach (Atalay 2006, Nicholas and Andrews 1997, Silliman 2008b, Smith 1999, Smith and Wobst 2005, Watkins 2000, 2014a)
- ❖ Community-based research that address the importance of archaeologists and the descendant groups collaborating in design, process, and interpretation of archaeological investigation is applied to make sure that the interpretation of Indigenous heritages is multivocality (Atalay 2012)

## ❖ Indigenous Archaeology

- ❖ Seeks to minimize the impact of archaeological investigation (Lightfoot 2008)
- ❖ Applies remote-sensing technologies in Indigenous archaeological practice

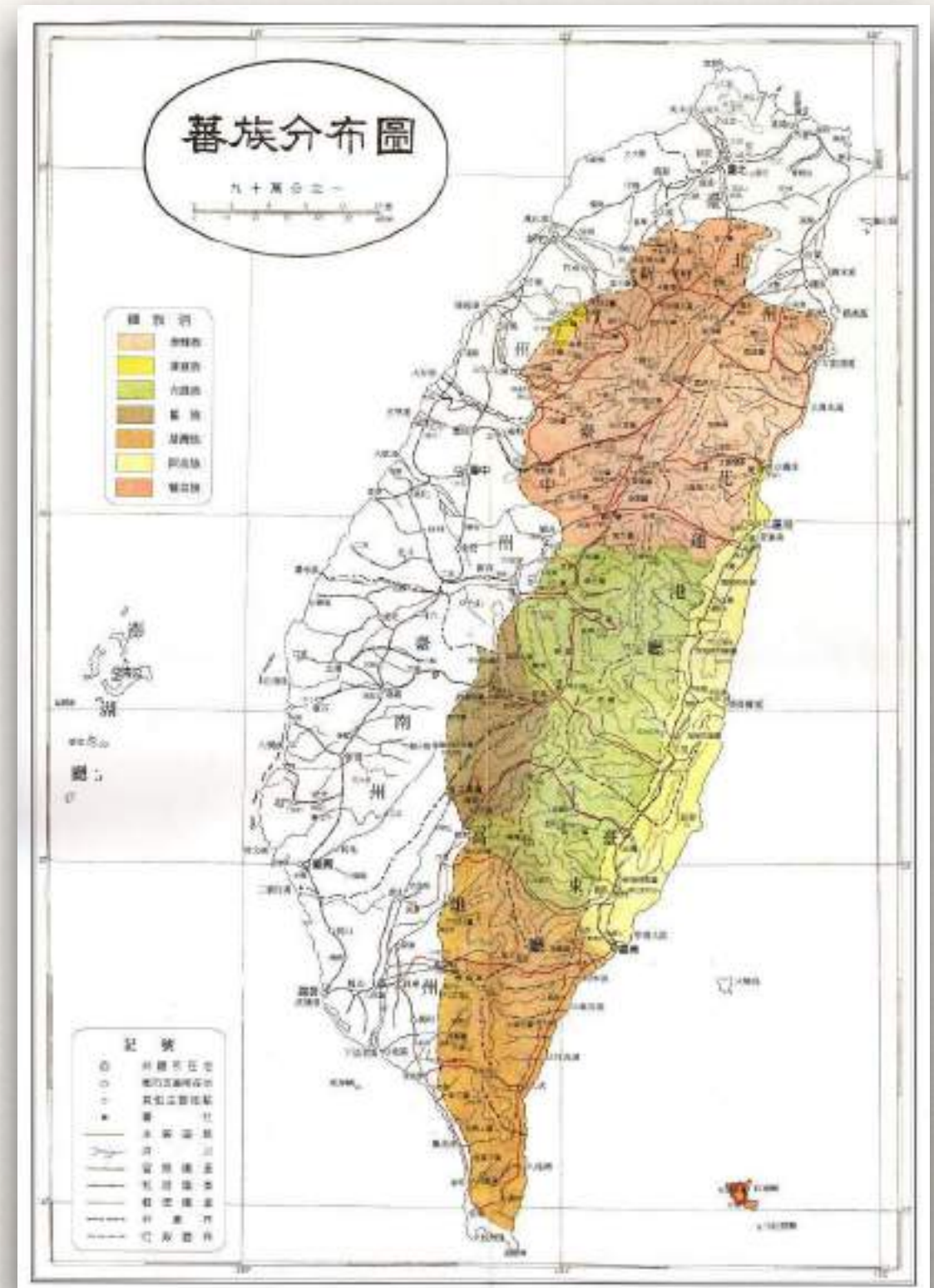
## ❖ Indigenous Archaeology

- ❖ indigenous archaeologies, celebrating its multiplicity across regions and subjects (Atalay 2008)
- ❖ collaborative and indigenous archaeology has been advocated and practiced in East and Southeast Asia (e.g. Ang et.al. 2020, Acabado 2020, Acabado and Martin 2020, Acabado ed.al. 2017, Heng et.al 2020, Stark 2020, Watkins 2014b) , including Taiwan






# The Former Indigenous Settlement Archaeology (jiushe archaeology) 舊社考古學

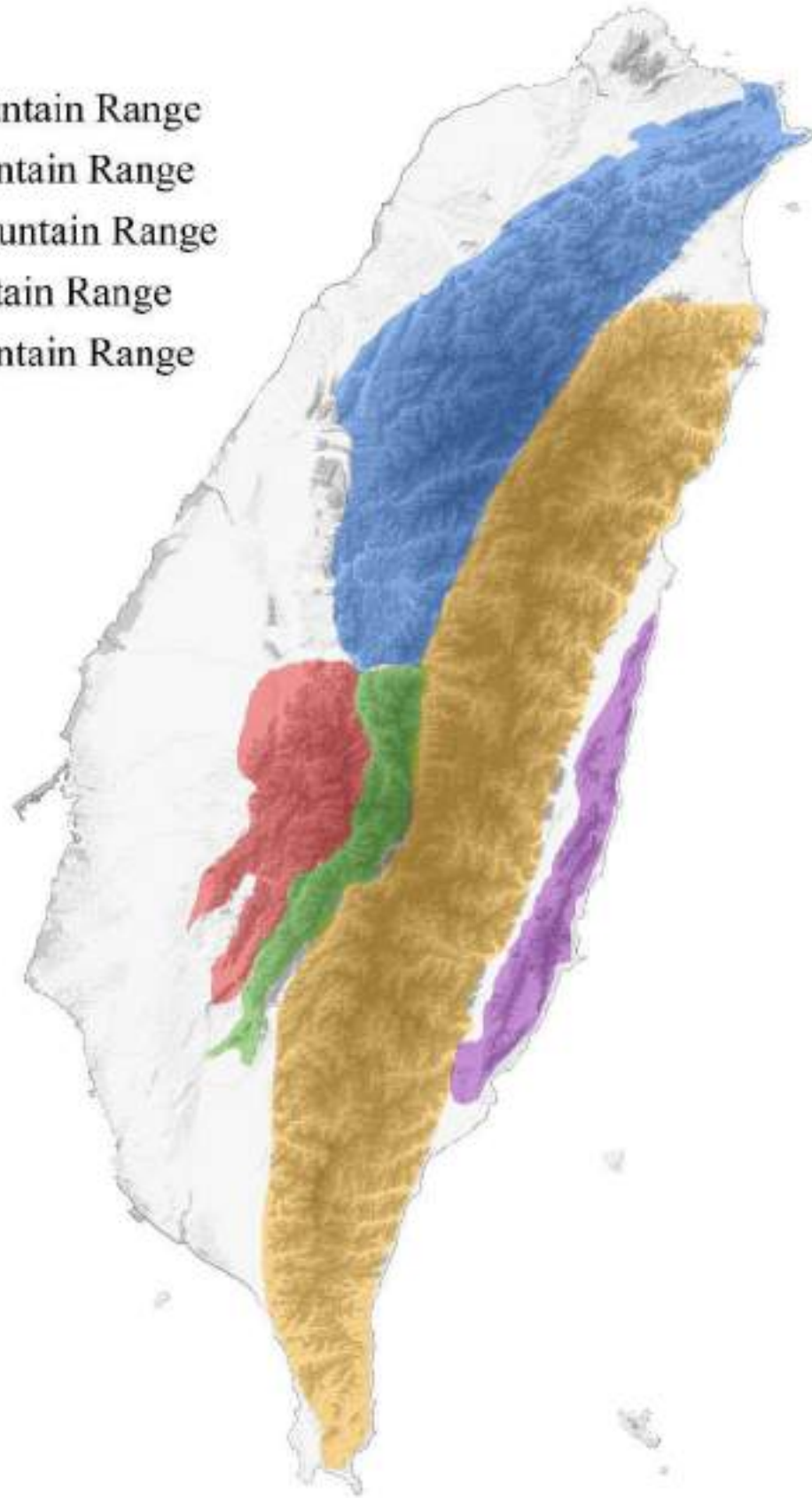
The distribution of  
the indigenous groups  
in the 1930s





**Legend**

-  Alishan Mountain Range
-  Central Mountain Range
-  Xueshan Mountain Range
-  Haiian Mountain Range
-  Yushan Mountain Range



Paiwan settlement



Bunun settlement



The Relocation of Highland Indigenous Tribes in the 1930s, 40s and 50s

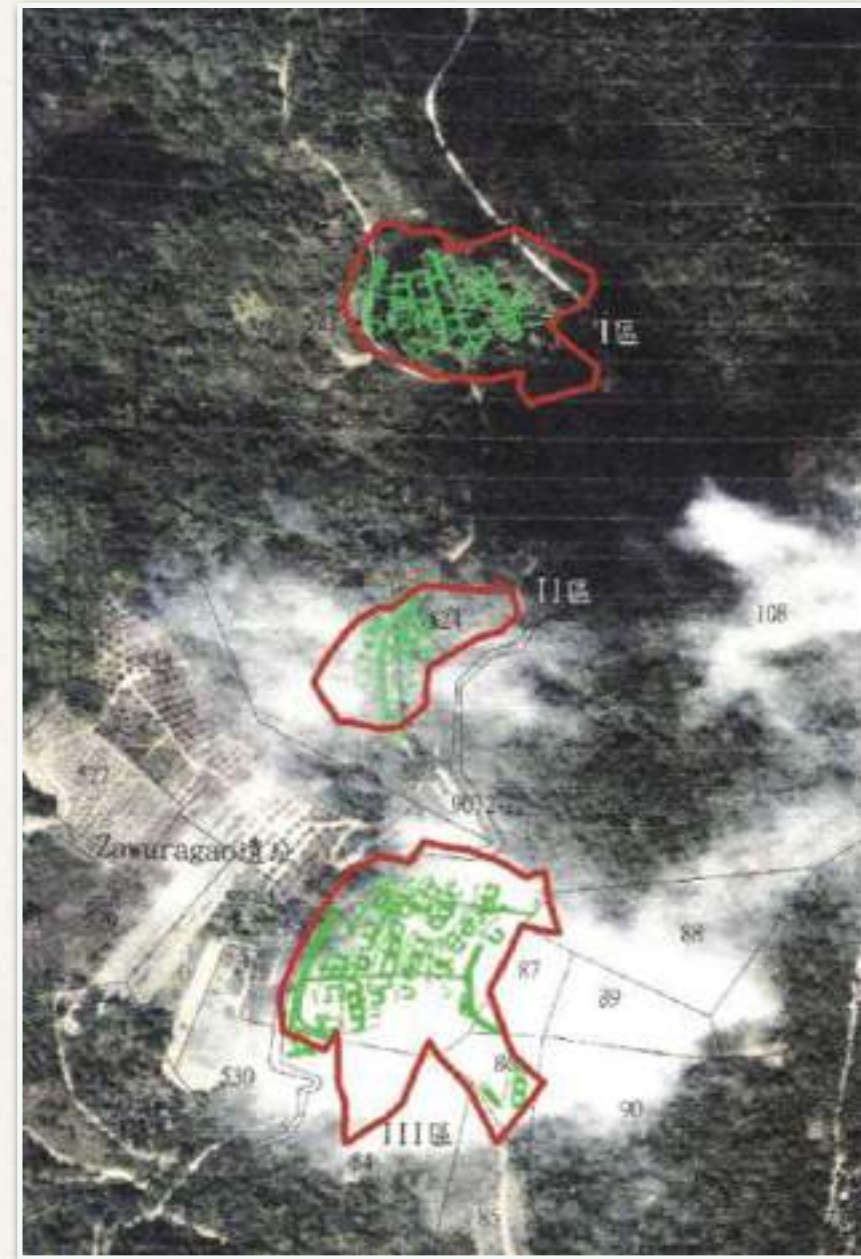
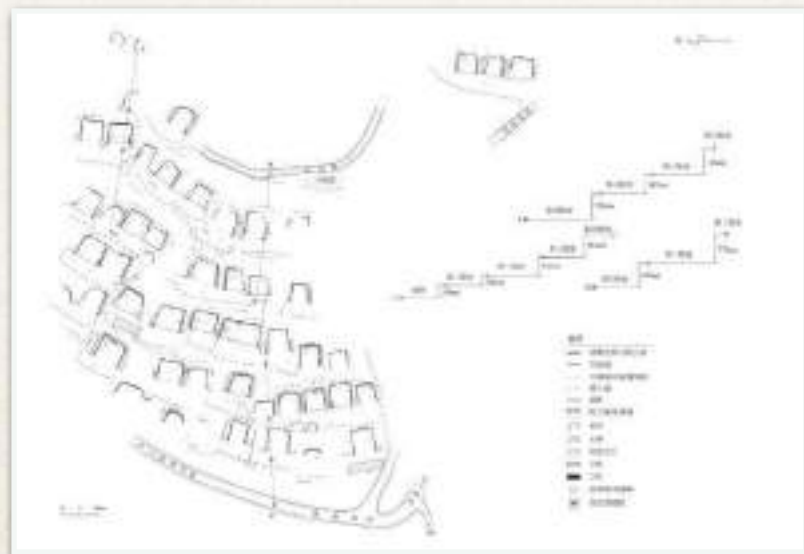
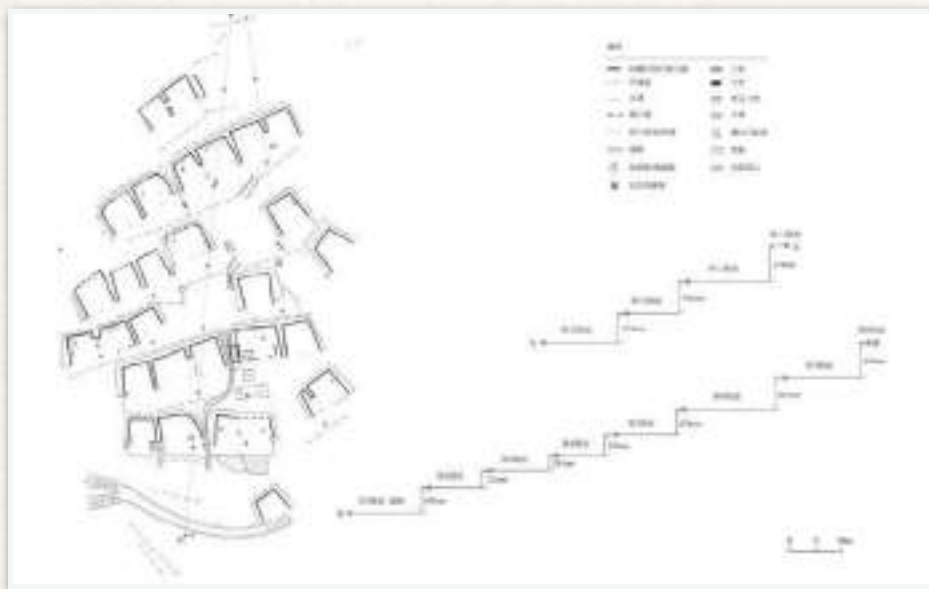
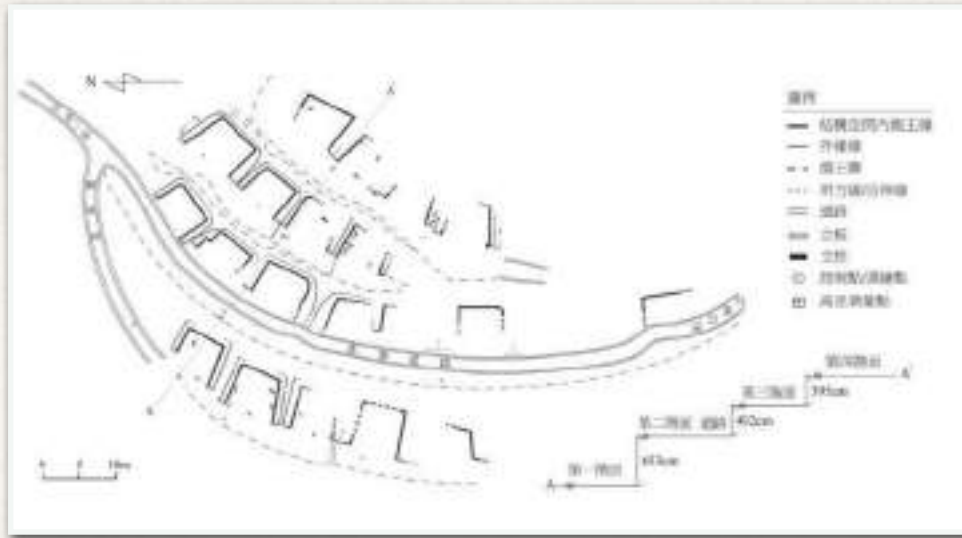


Examples of Bunun stone slab houses in the past and the present





# The Former Indigenous Settlement Archaeology (jiushe archaeology) 舊社考古學



The archaeological study of Wenle site, a former settlement of Paiwan group (Guo et.al 2017)



# “Root-seeking” Expedition of the Indigenous People of Taiwan







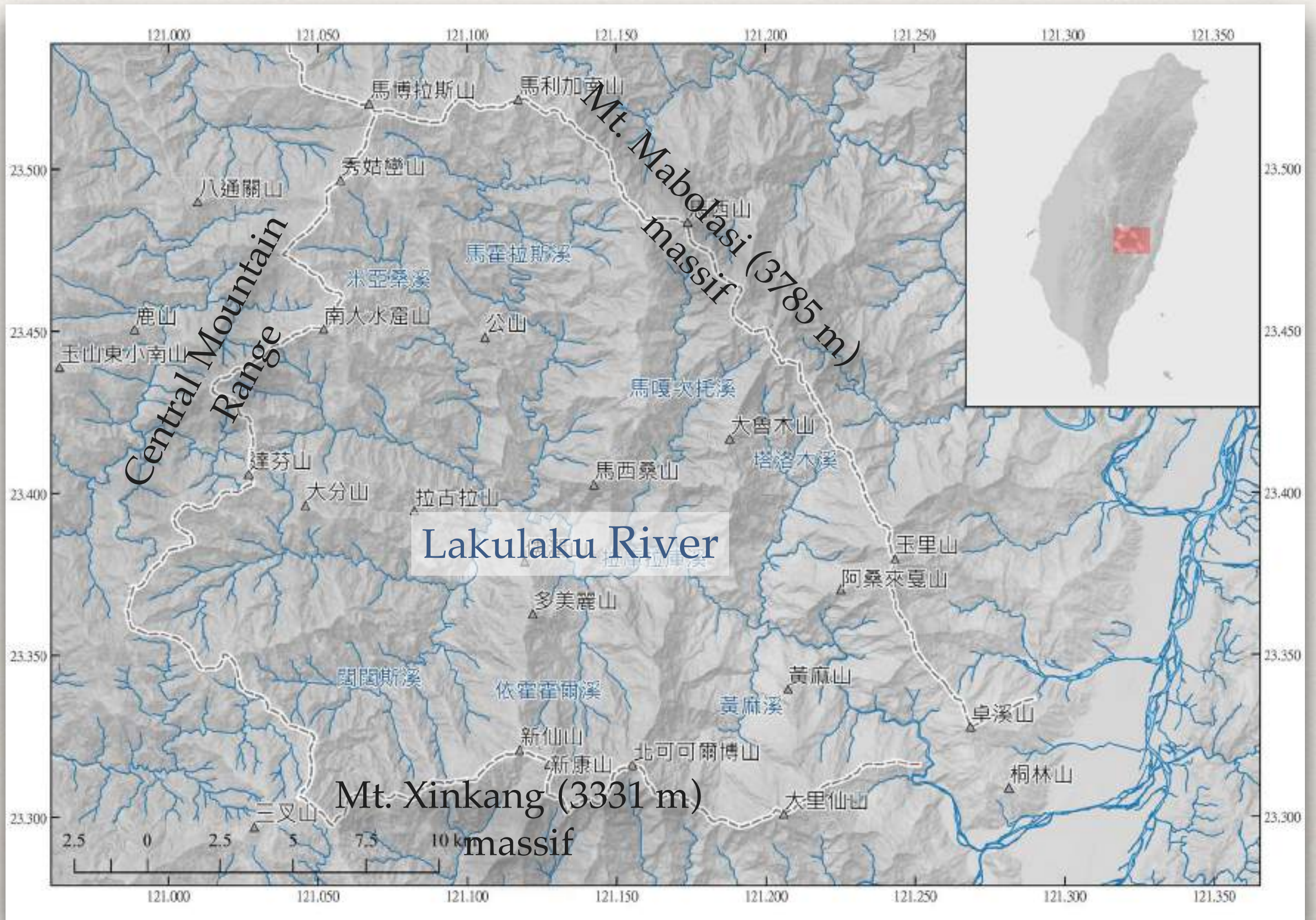
The Bunun decedents from Laipunuk raising their flag to celebrate the 20th annual Roots-seeking trip



(photo provided by Lipo Yang)



# Indigenous Archaeological Project in the Bunun Country Since 2014





# The Lakulaku River Basin: the Bunun Country

Bunun sub groups

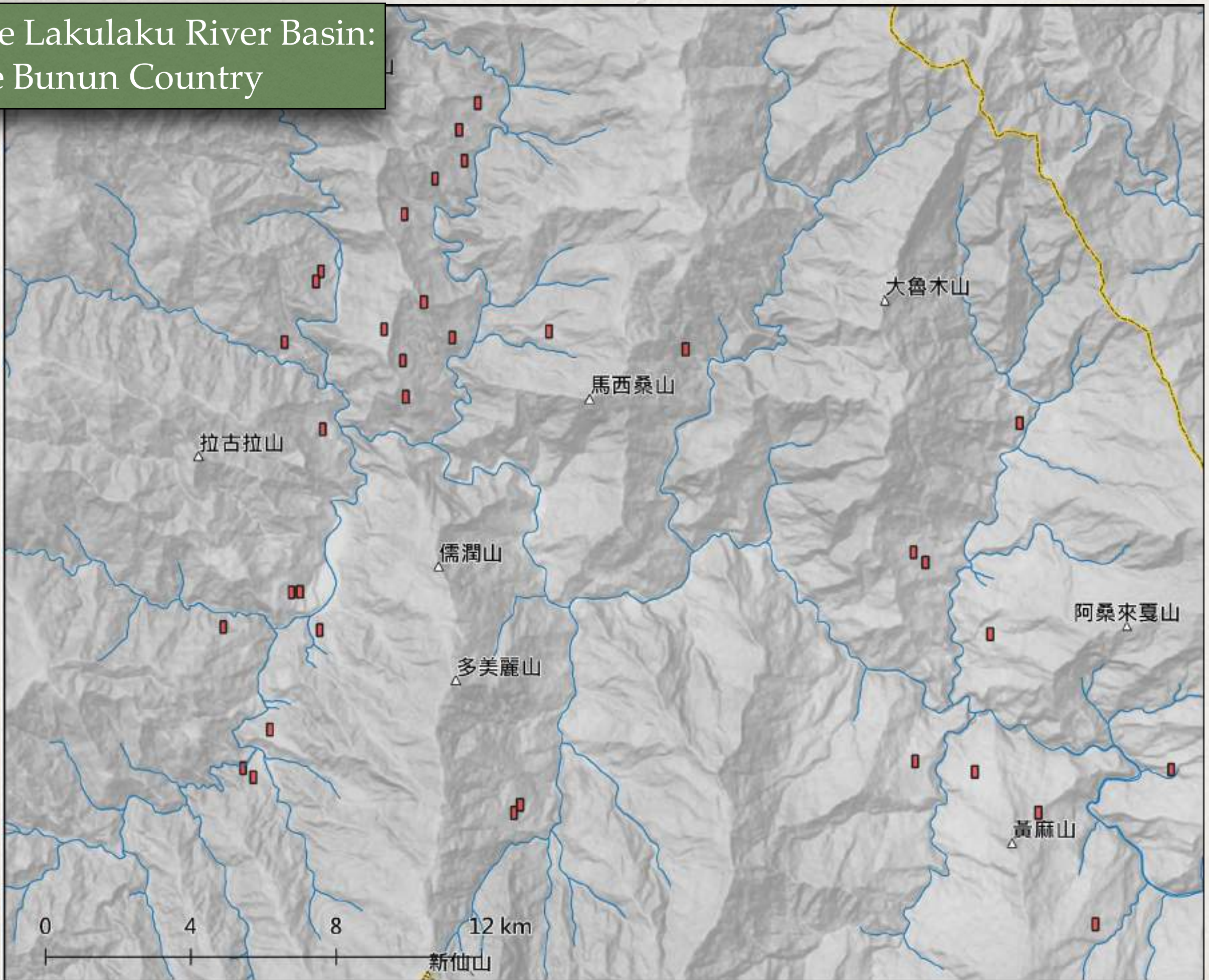
Takopulan, Take-todo, Take bakha, Take vatan, **Takebanuad** and **Isbuku**



The Bunun's expansion in the mountain of Taiwan



# The Lakulaku River Basin: the Bunun Country

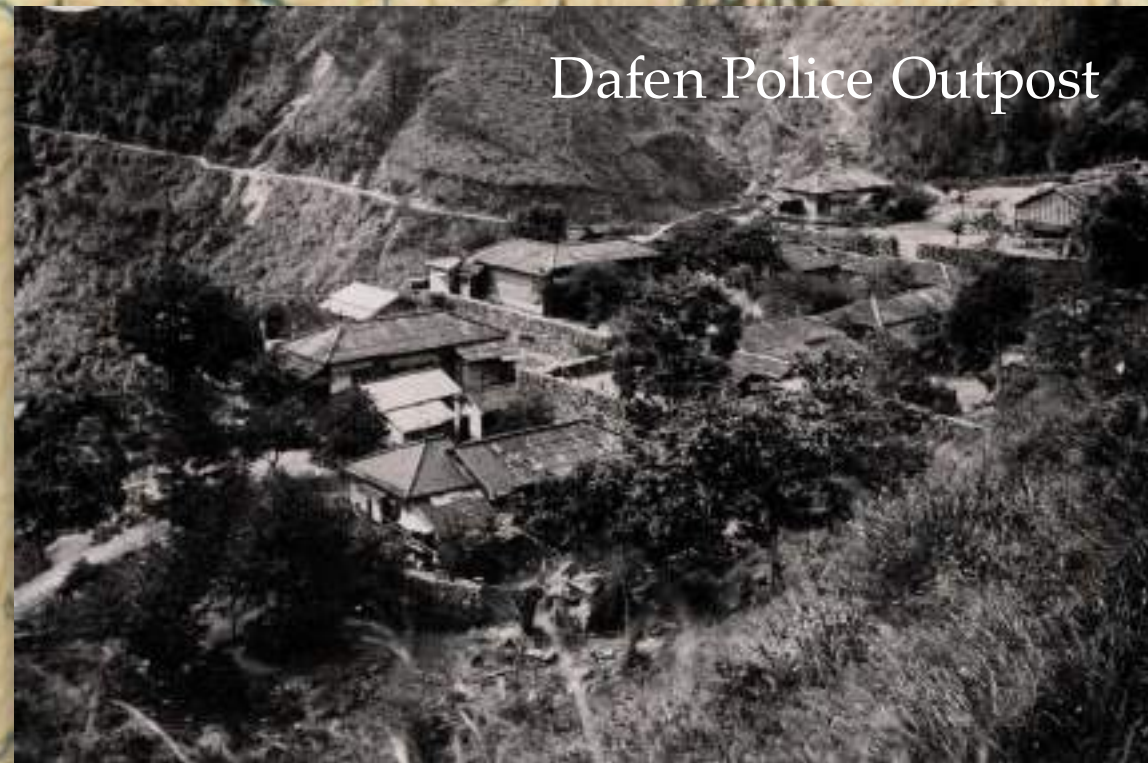




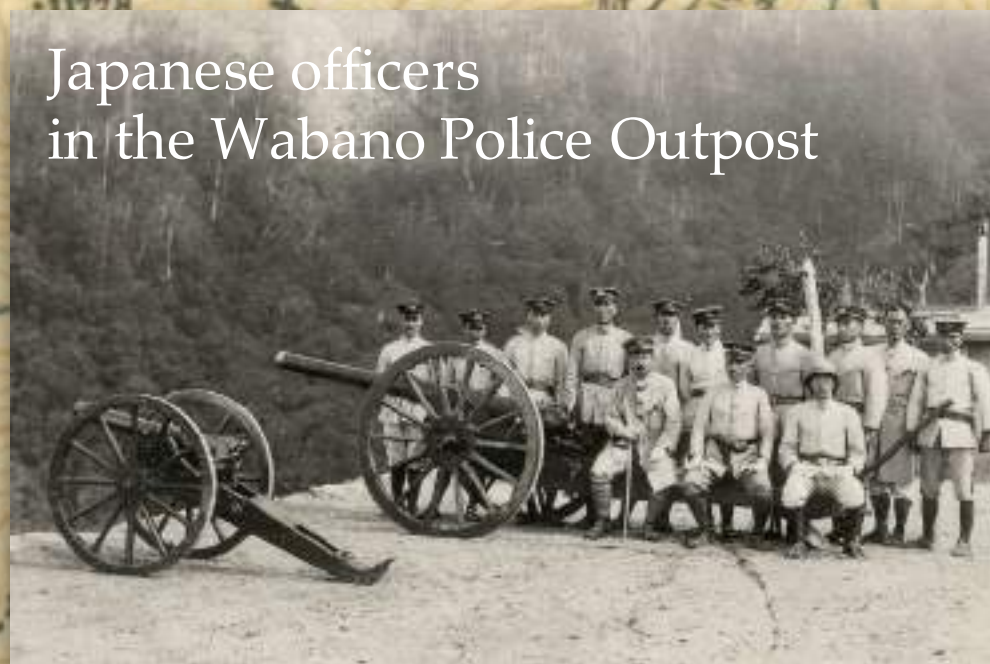
The Pattonkan Transmontane Trail



Dafen Police Outpost



Japanese officers in the Wabano Police Outpost







The annual Ear-Shooting Ceremony now being hold in modern-day Bunun tribe<sub>15</sub>











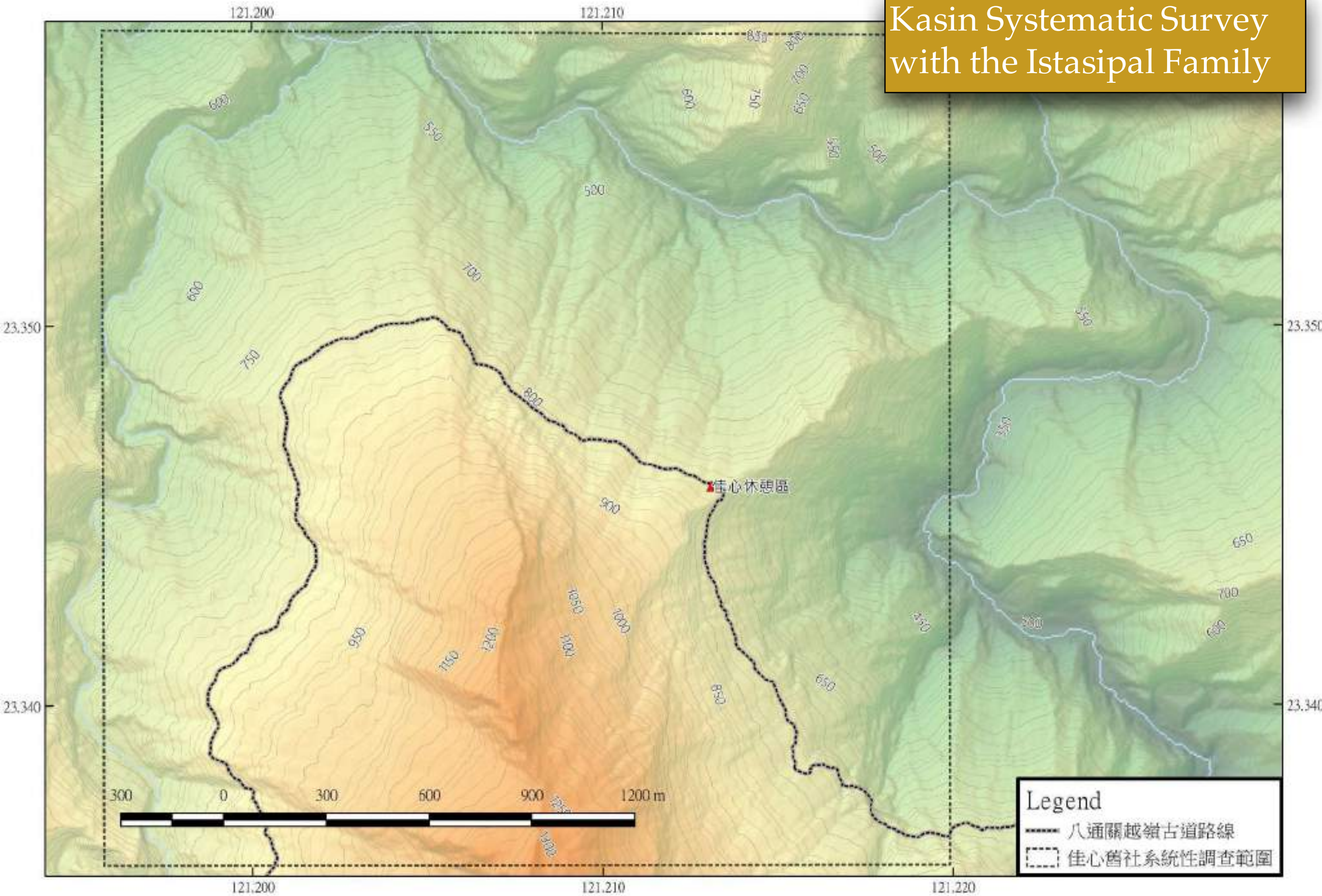








# Kasin Systematic Survey with the Istasipal Family





Kasin Systematic Survey  
with the Istasipal Family





Kasin Systematic Survey  
with the Istasipal Family





Kasin Systematic Survey  
with the Istasipal Family





Kasin Systematic Survey  
with the Istasipal Family



Bunun's field system in the 1920s



Stone-made field structure in Kasin

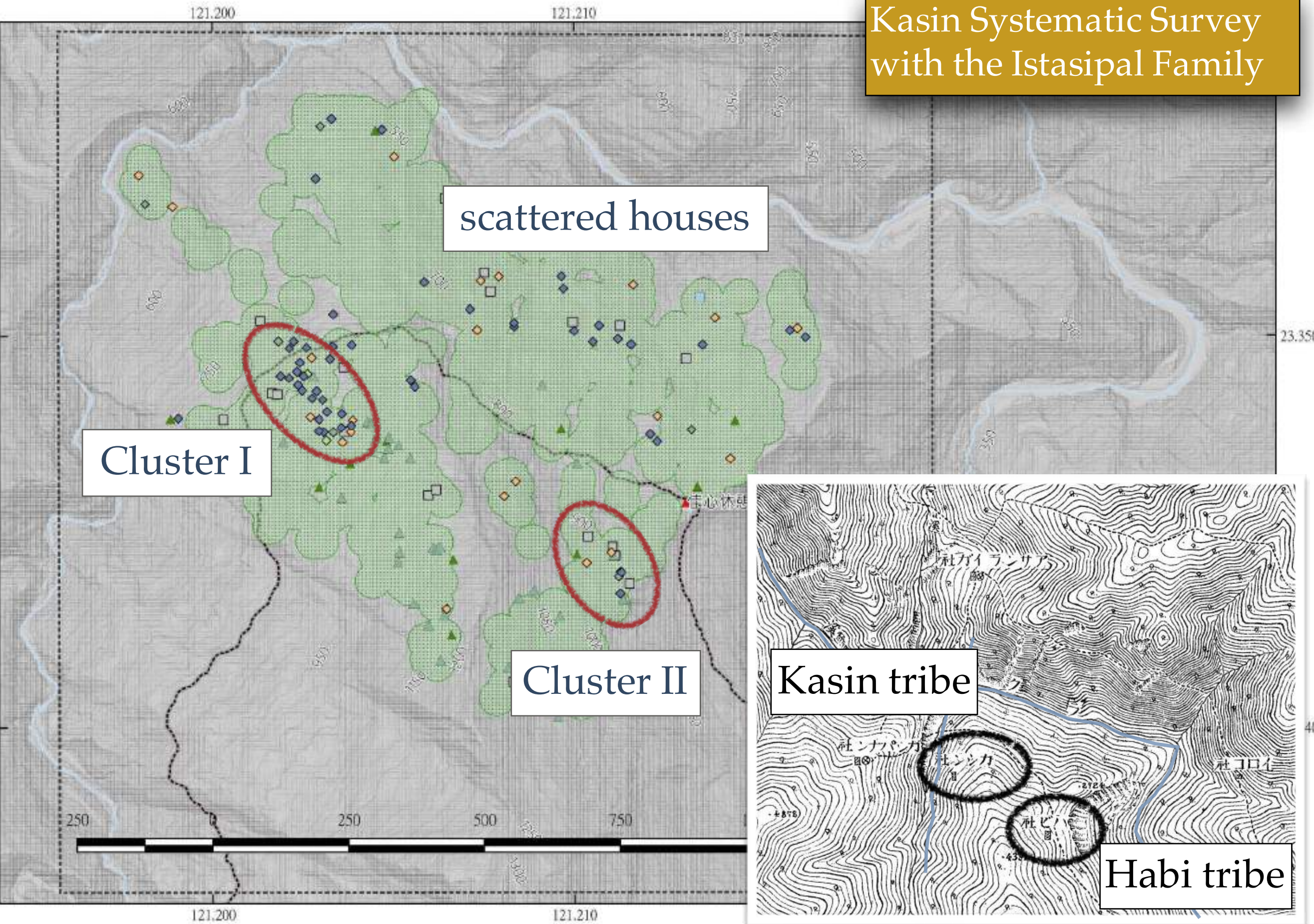


## Kasin Systematic Survey with the Istasipal Family





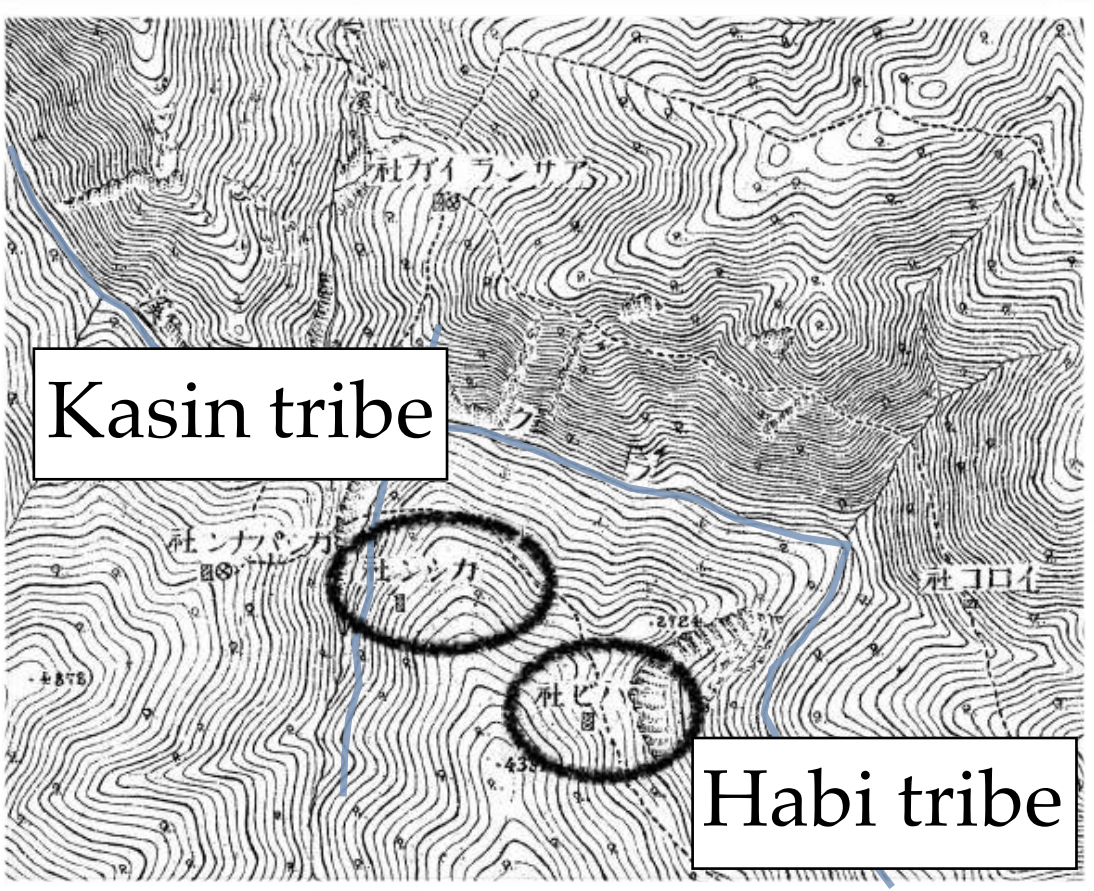
Kasin Systematic Survey with the Istasipal Family



scattered houses

Cluster I

Cluster II

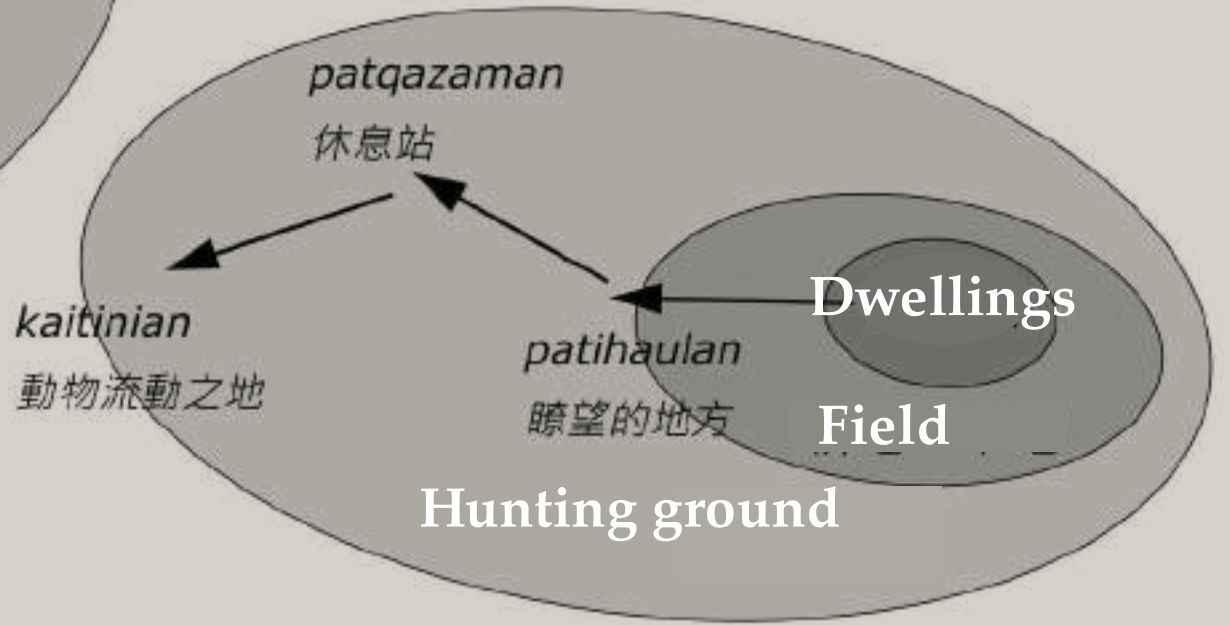
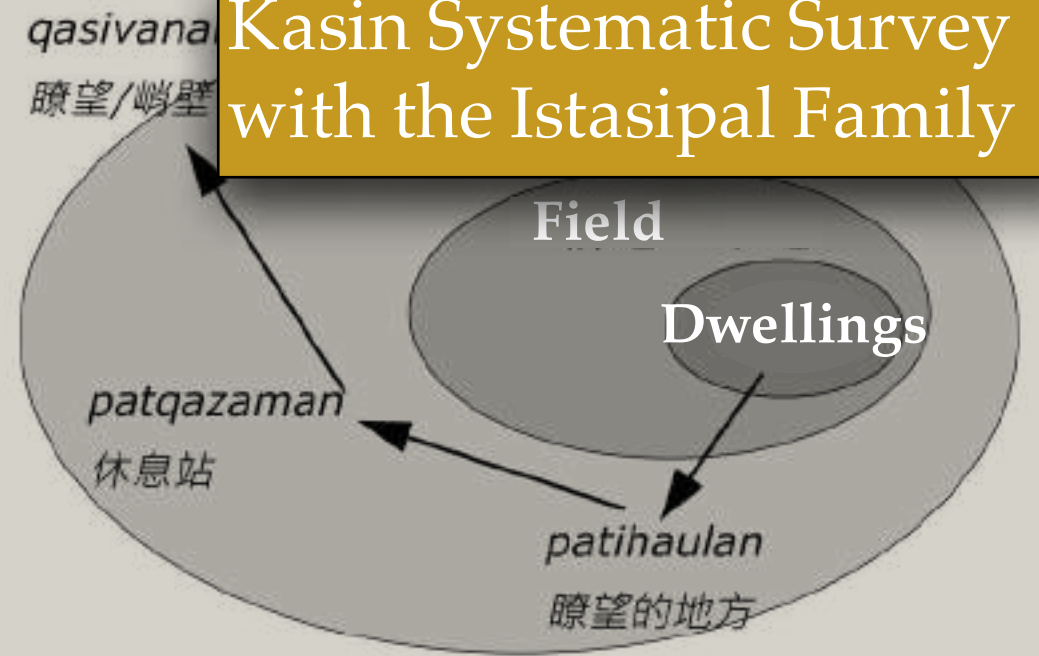
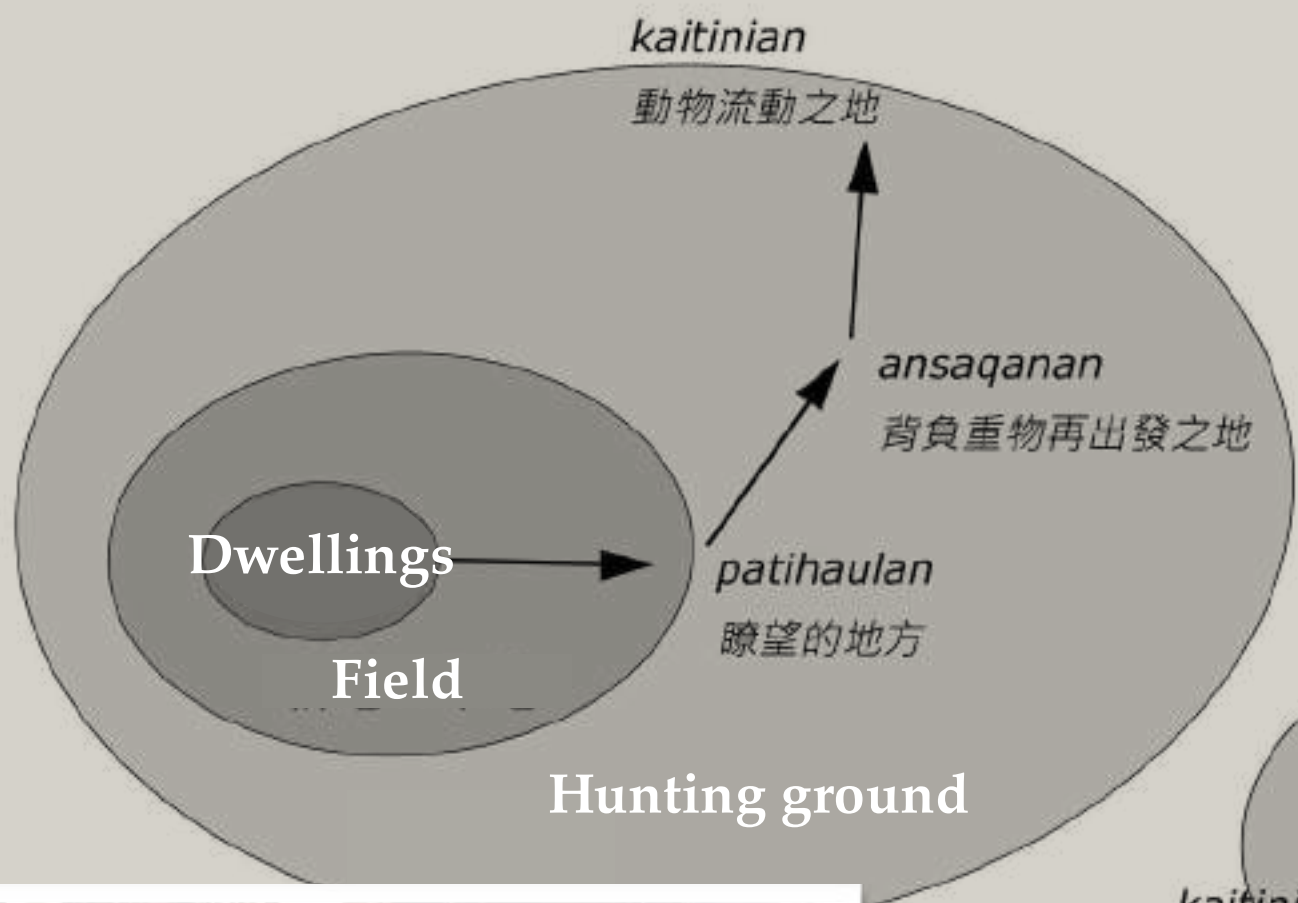


Kasin tribe

Habi tribe



**Kasin Systematic Survey with the Istasipal Family**

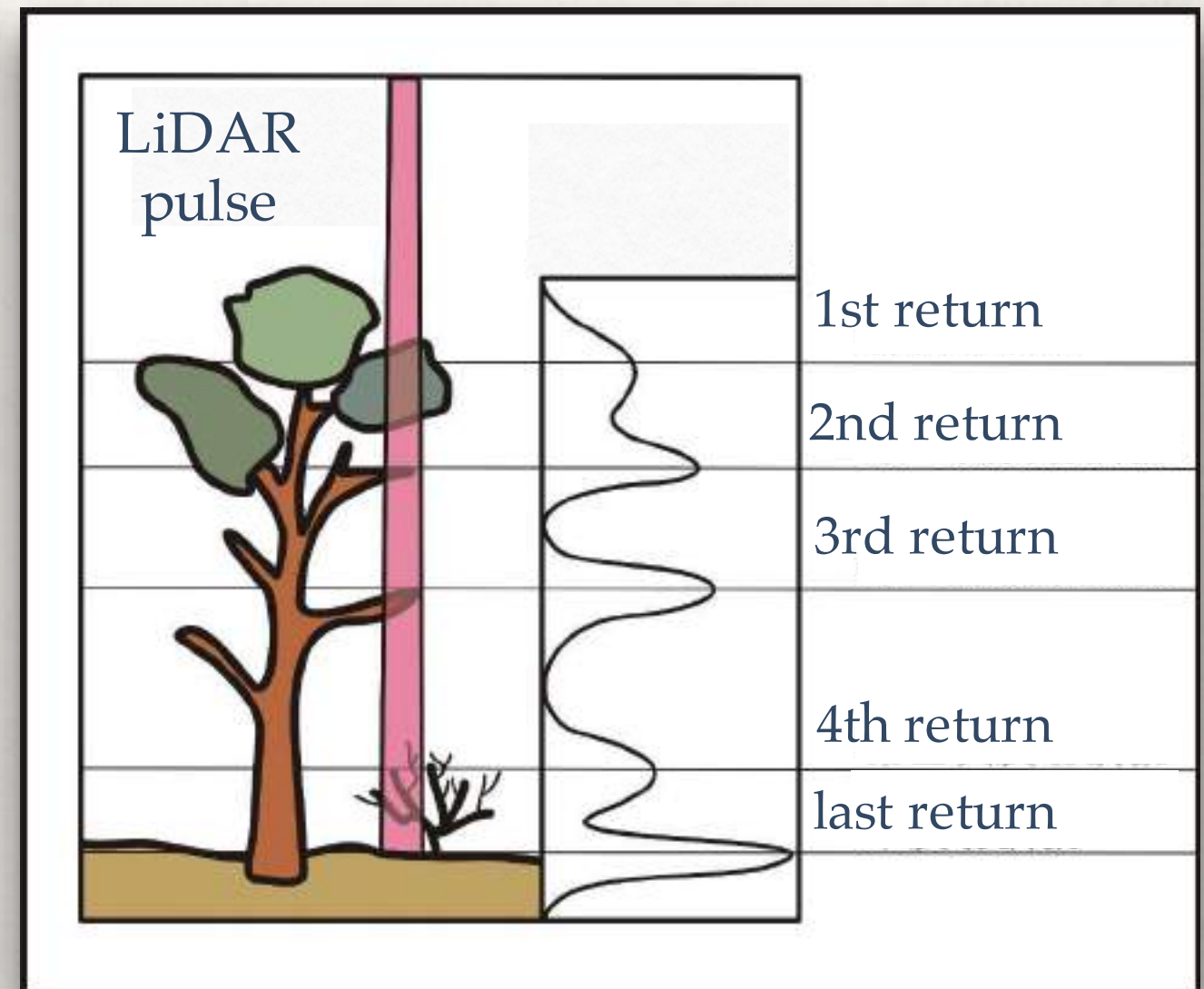
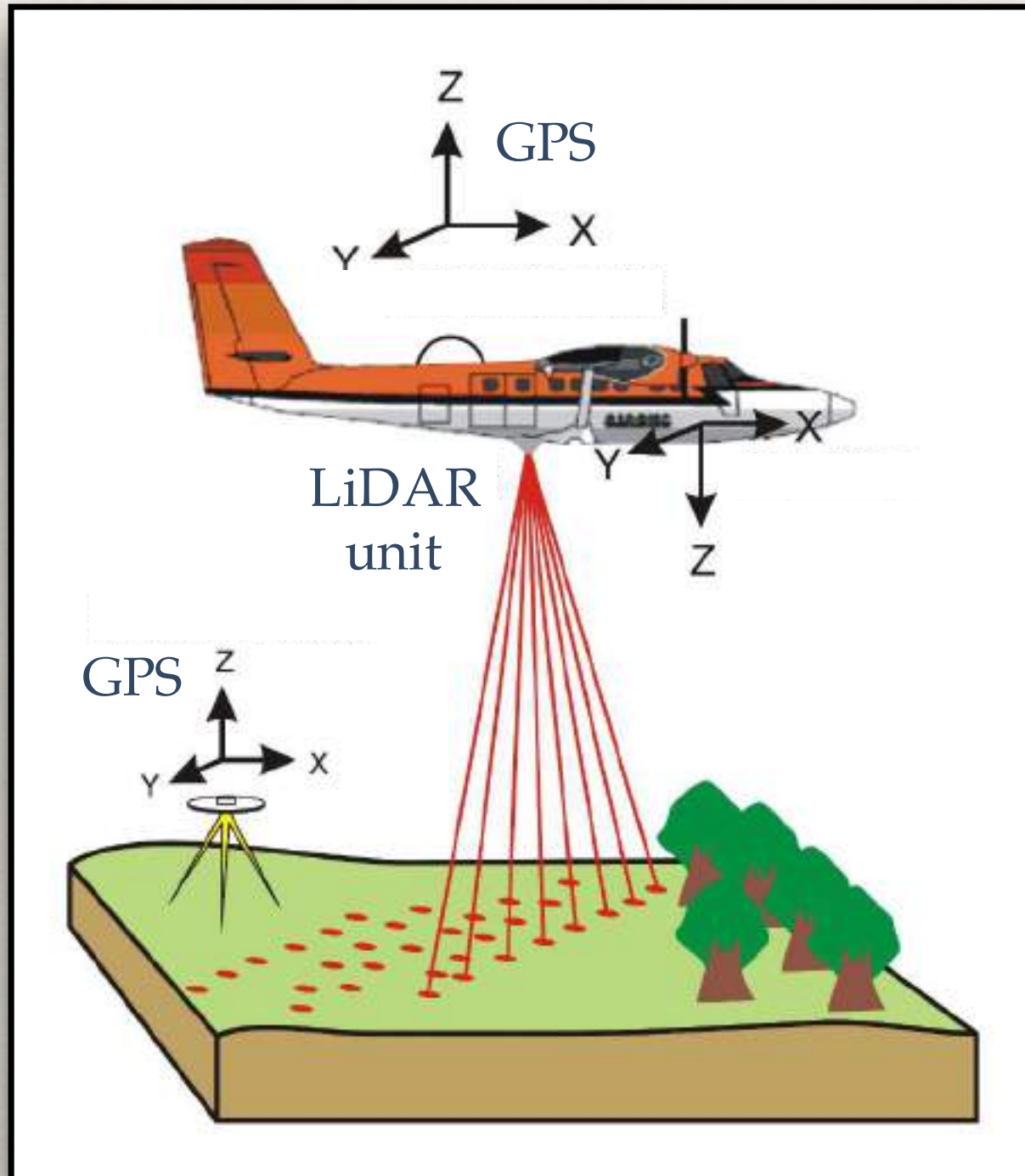


Elements of a Bunun tribe dwellings, fields, and hunting grounds



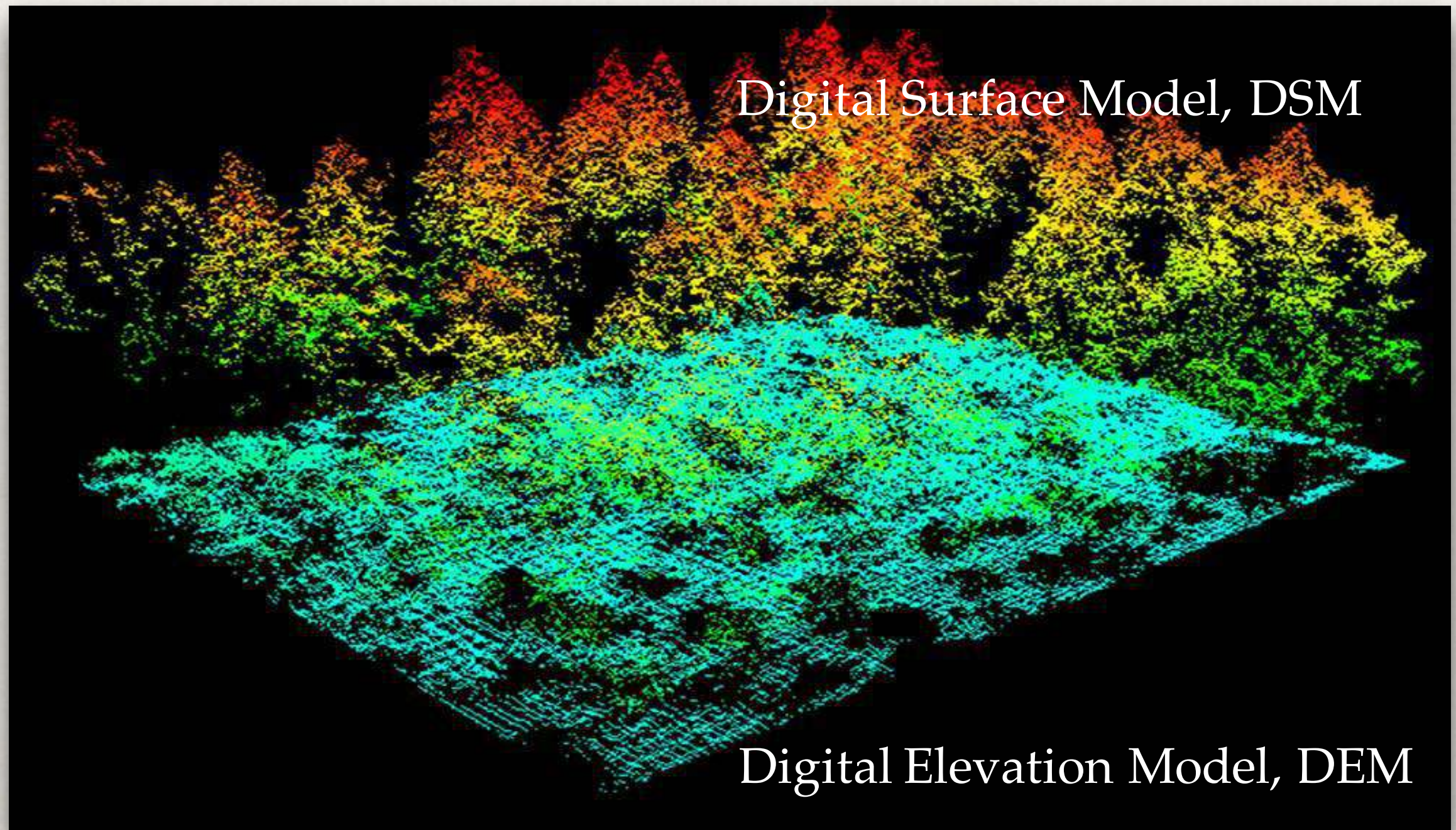
# The application of Airborne LiDAR in the search of the Bunun settlements in the Lakulaku River Basin

## Airborne LiDAR, light detection and ranging



(Huang et. al. 2004)





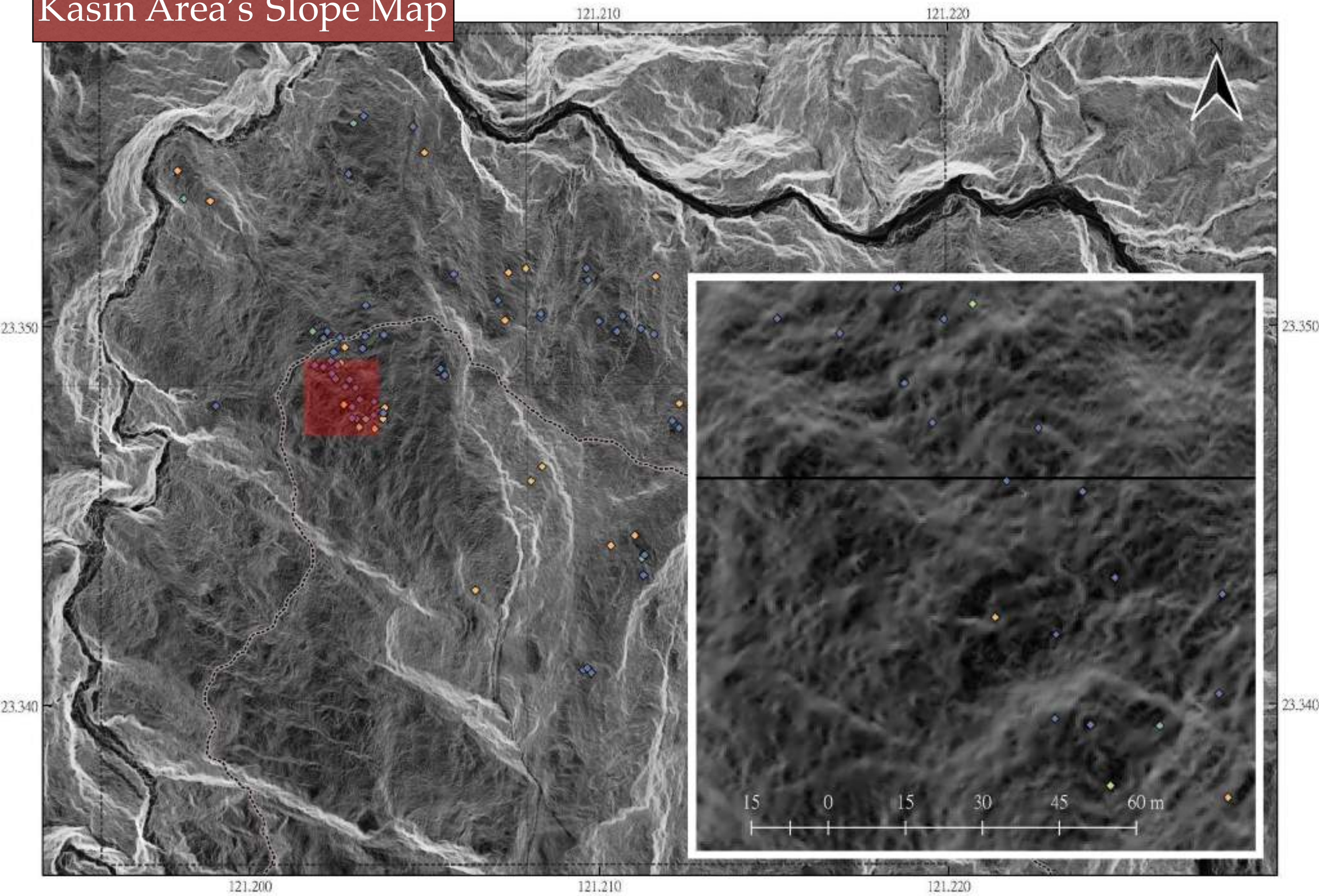
source: <https://medium.com/tesera/forest-inventory-observations-from-a-non-forester-b4467e76183d>



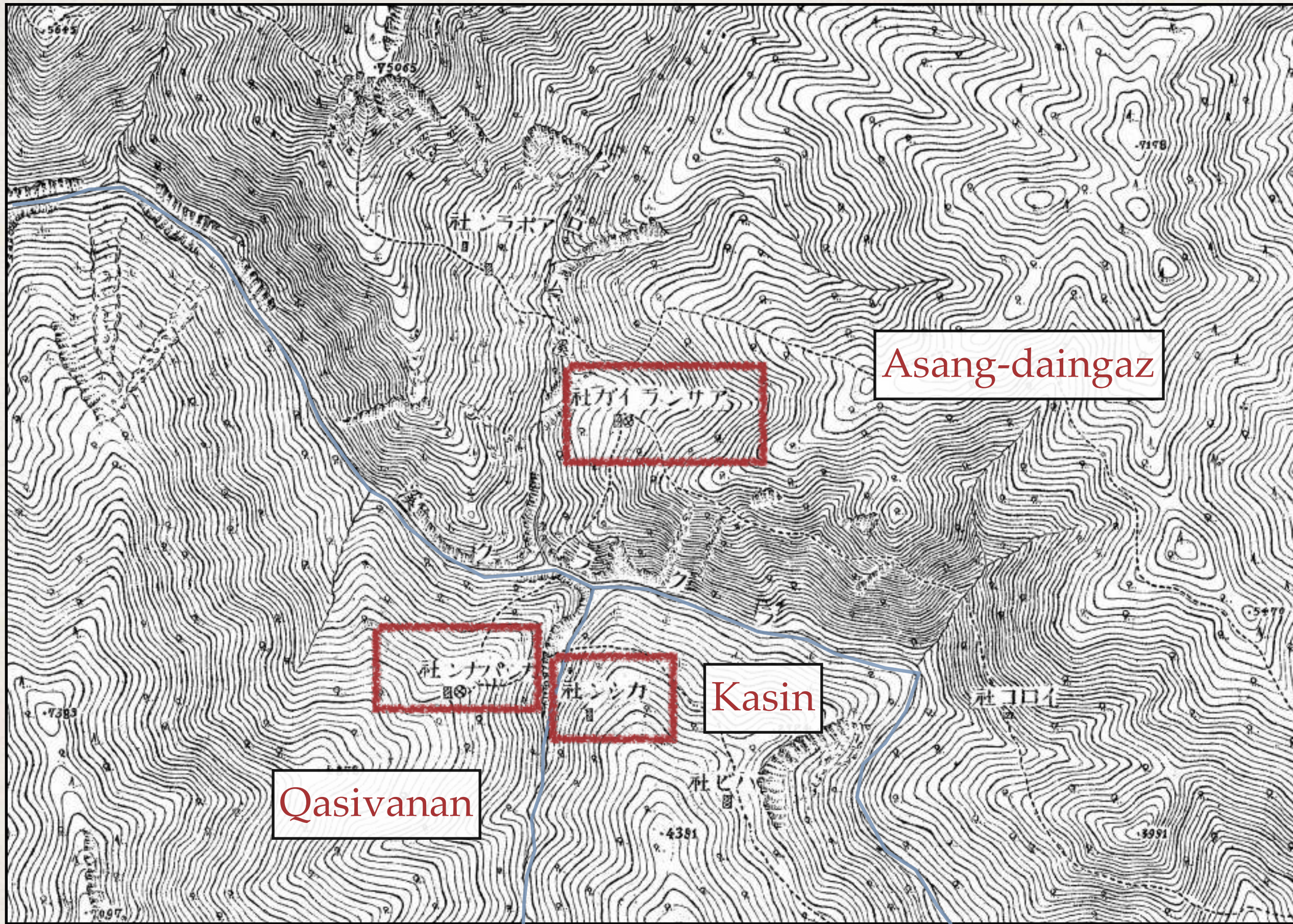




# Kasin Area's Slope Map







Asang-daingaz

社ガイランサア

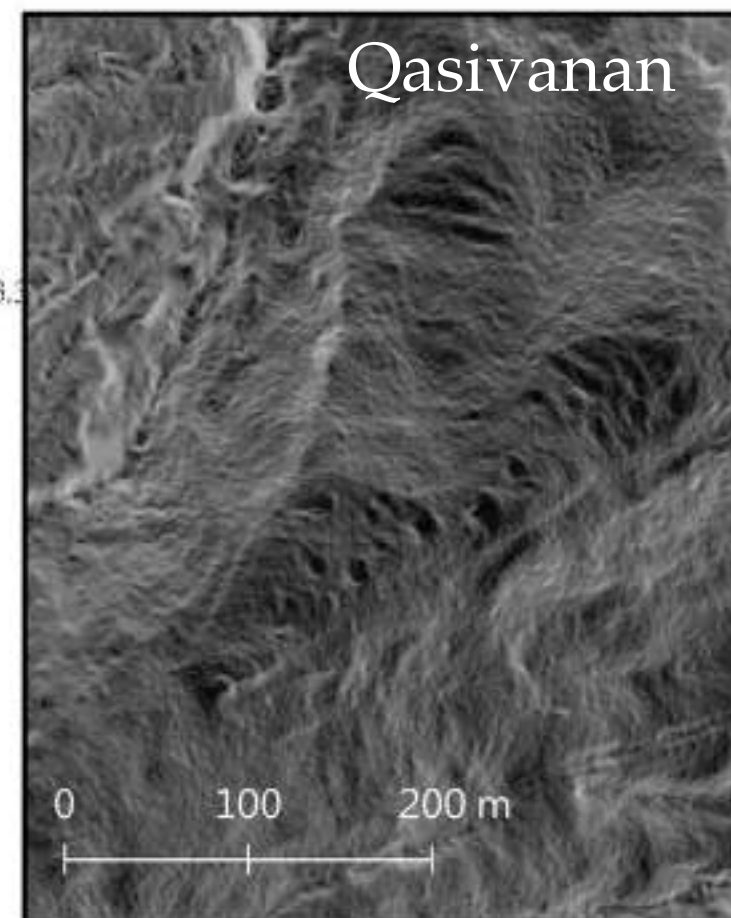
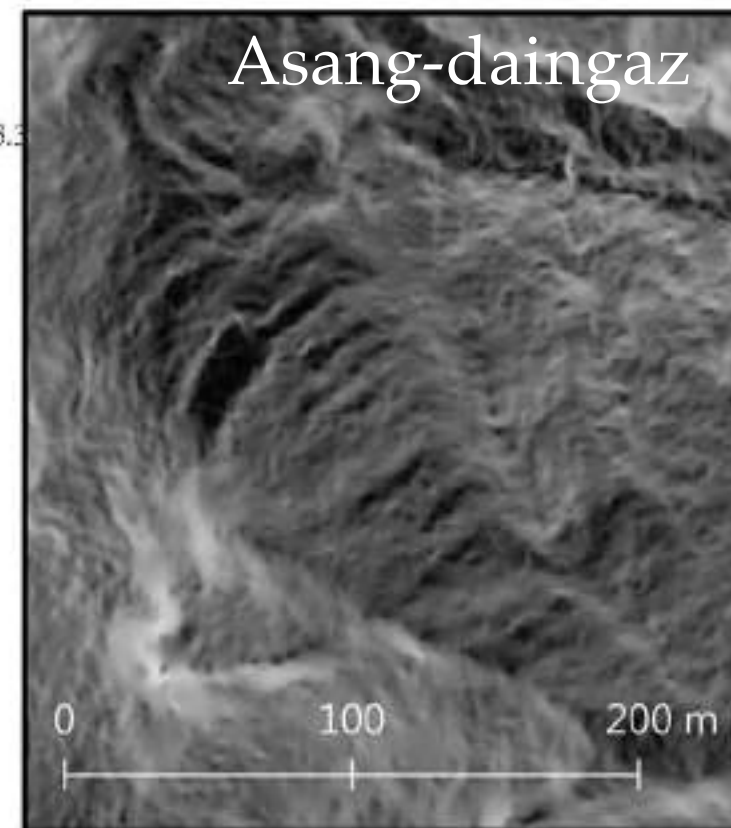
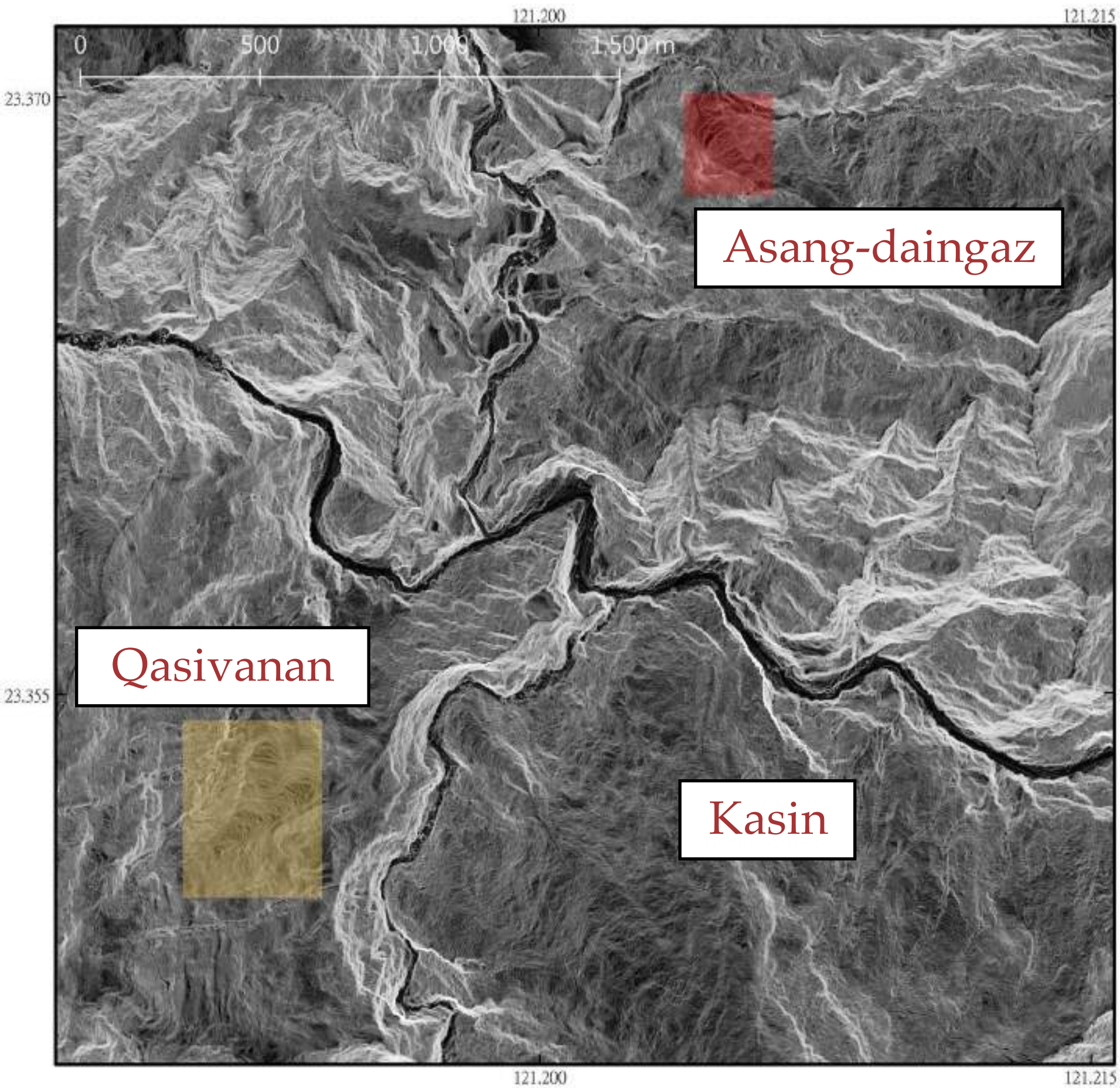
社ンカ

社ンカ

Kasin

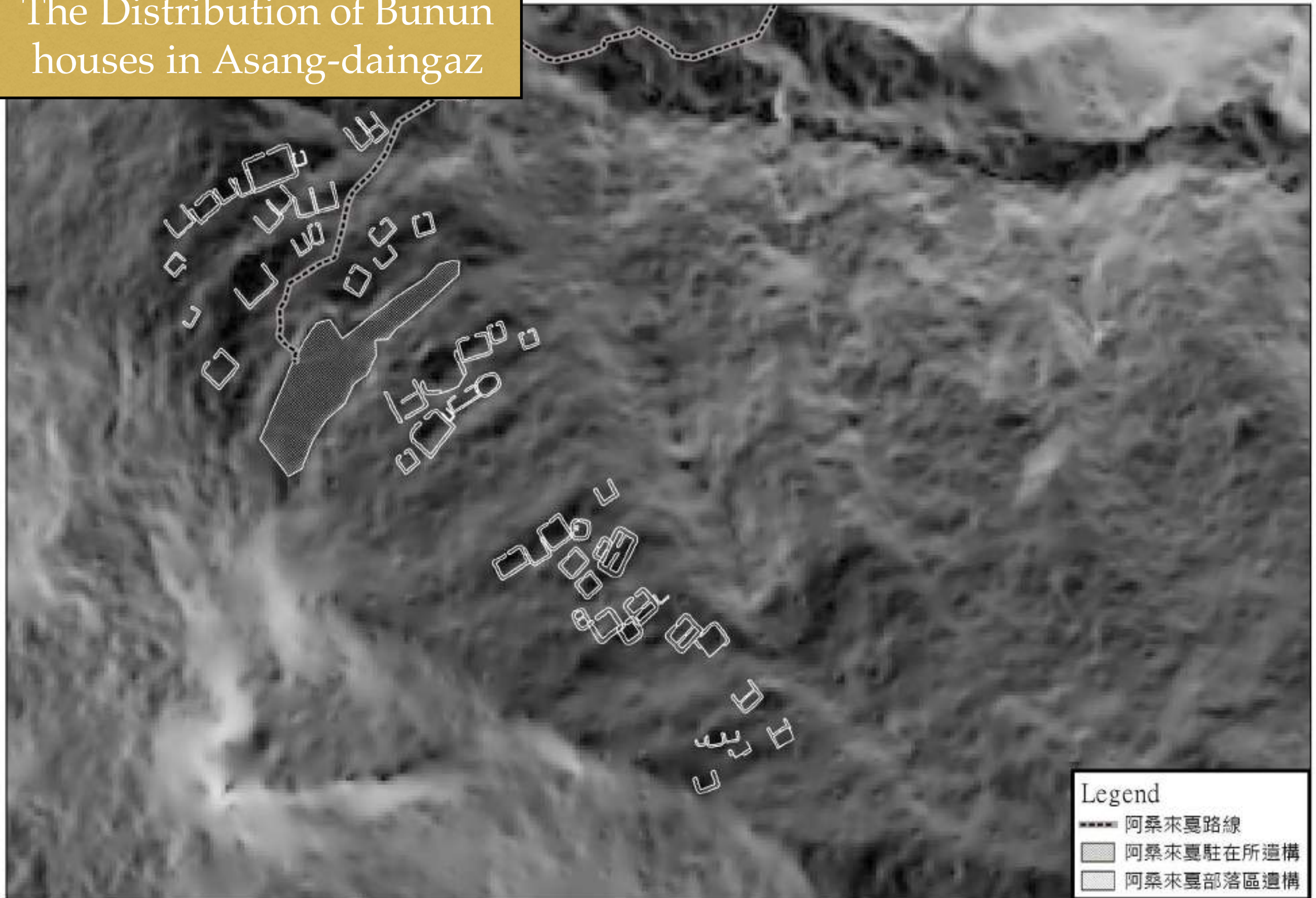
Qasivanan





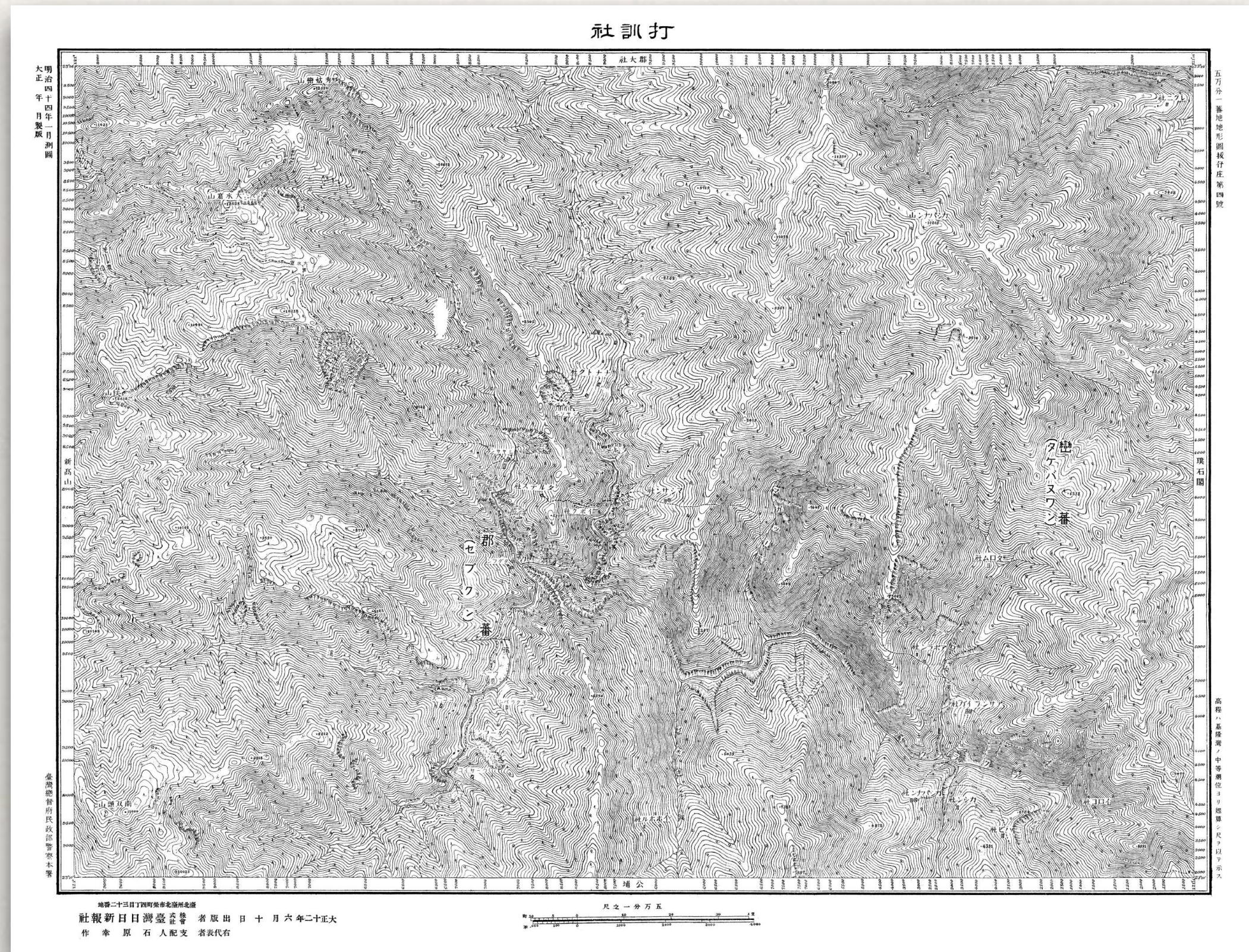


# The Distribution of Bunun houses in Asang-daingaz





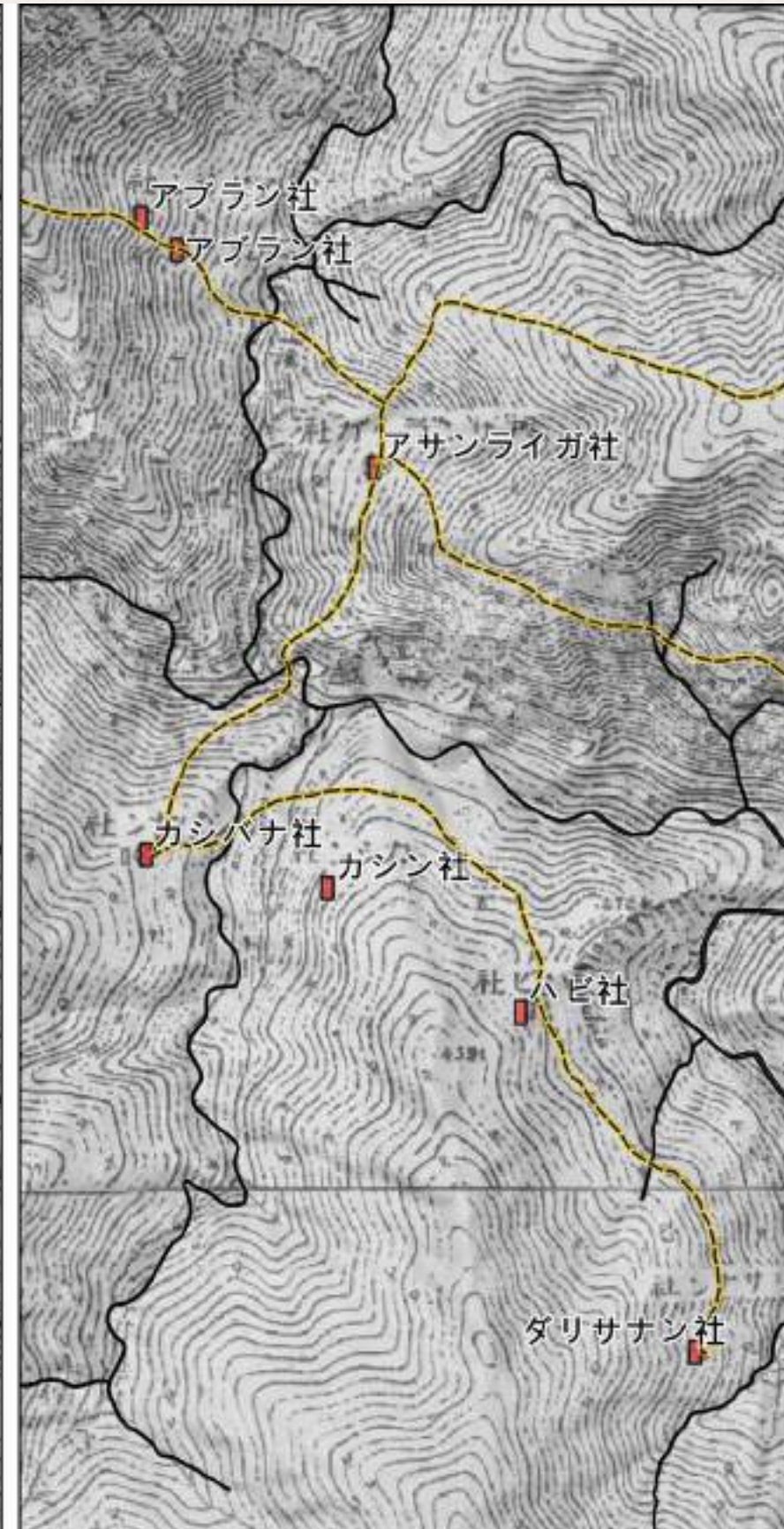
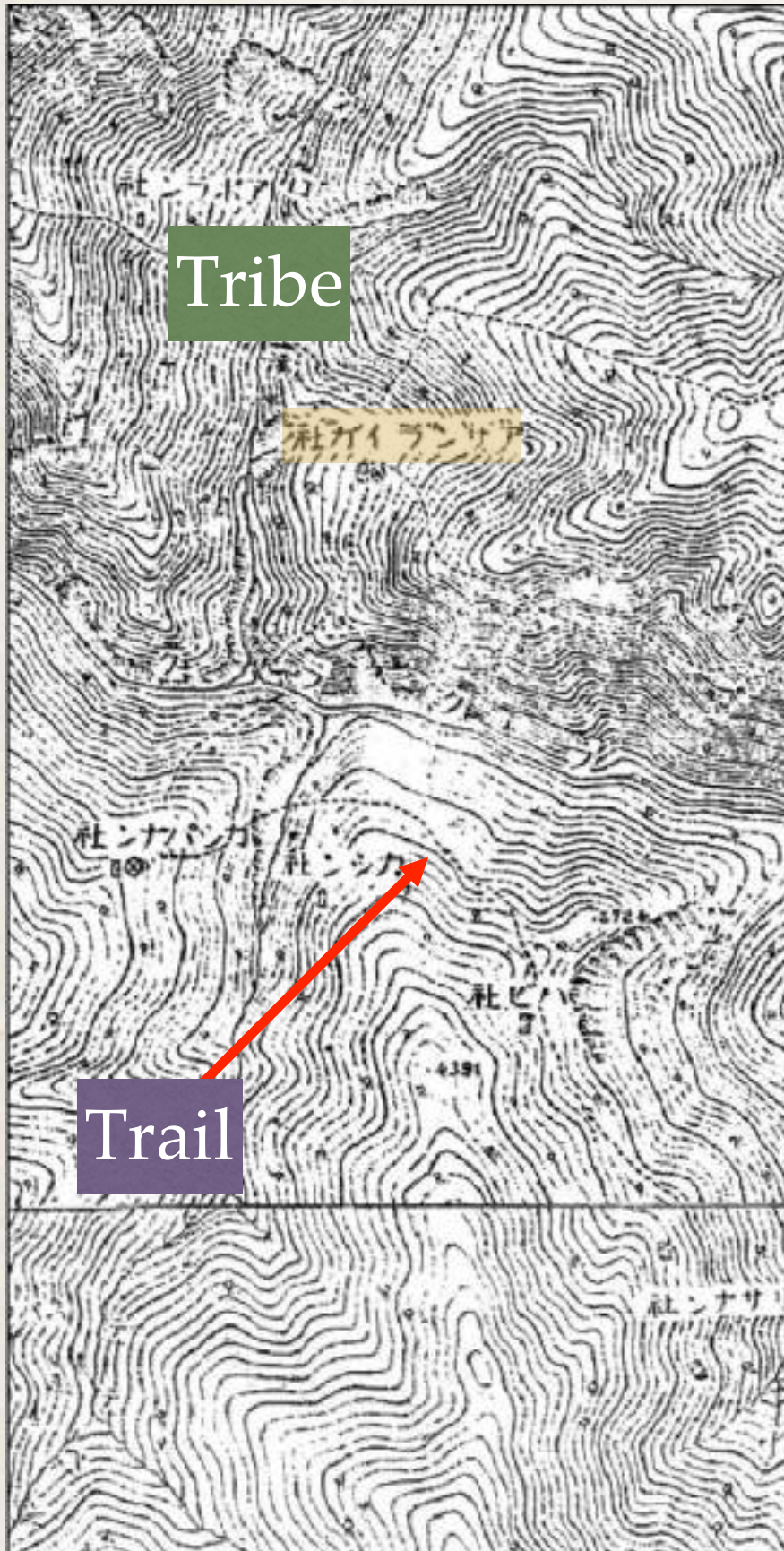
# Digital Survey of the Lakulaku River Basin



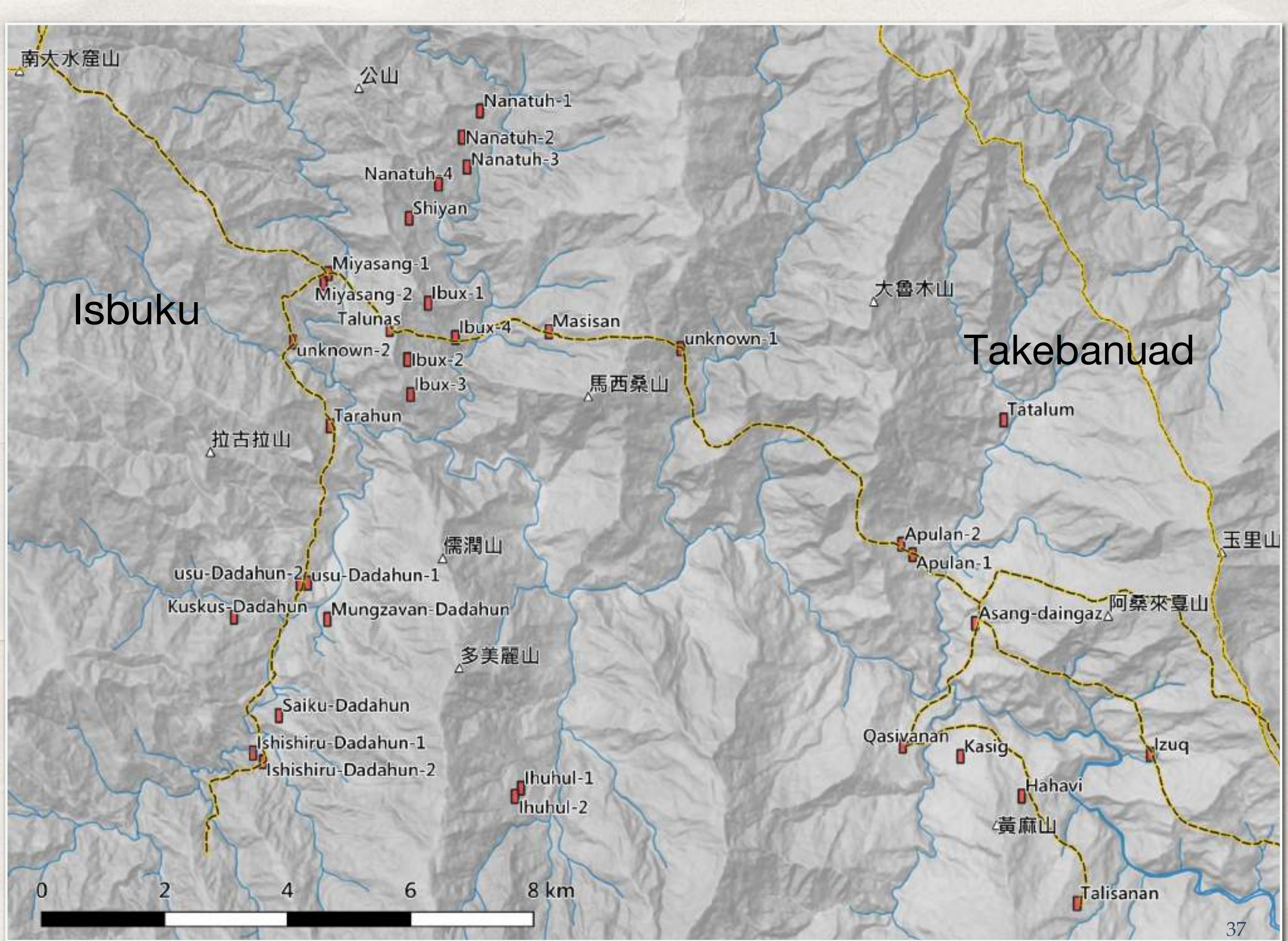
1:50,000 Japanese Map “Tahun Tribe (打訓社)”



# Georeferencing and Digitalizing the Historial Map

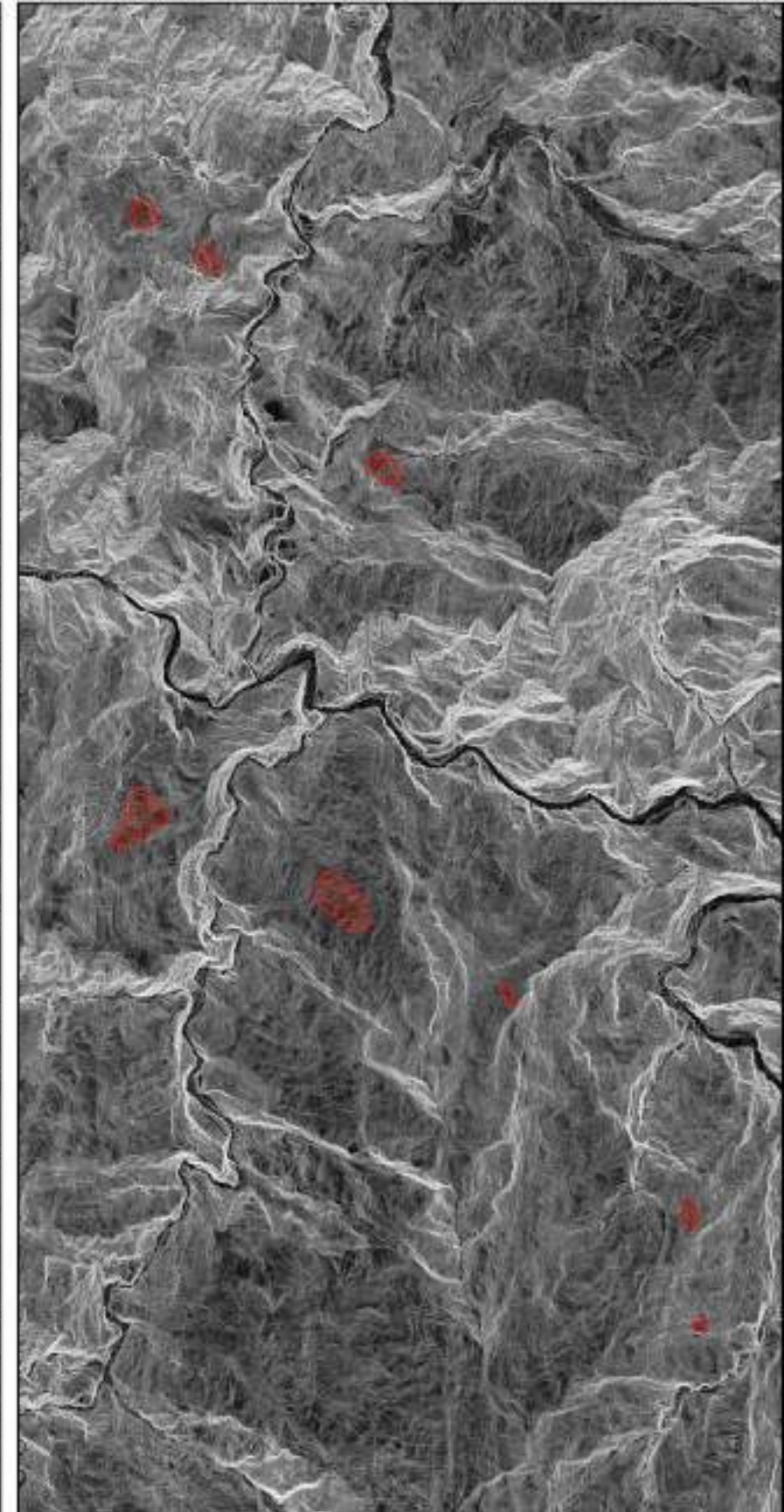
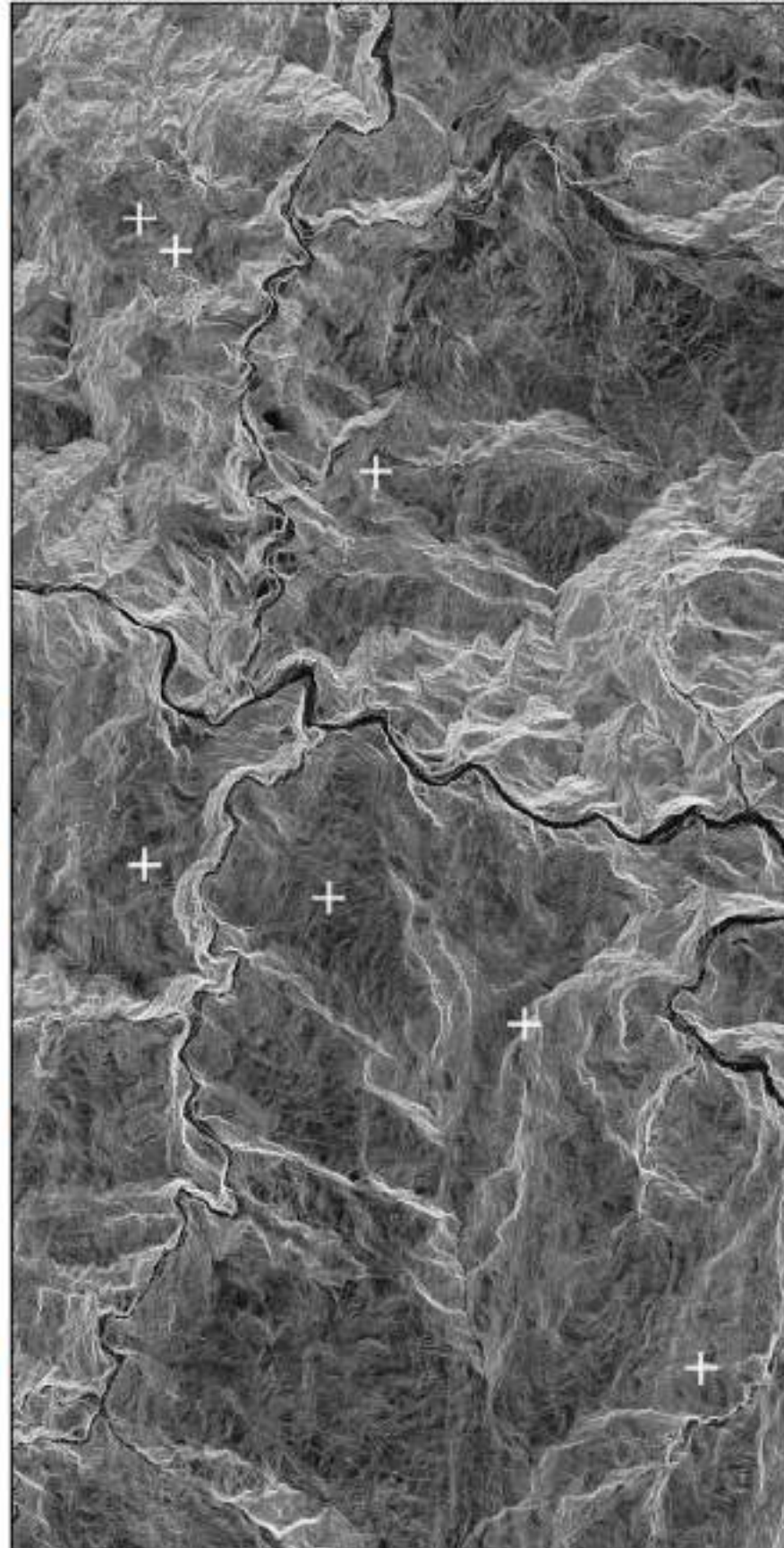
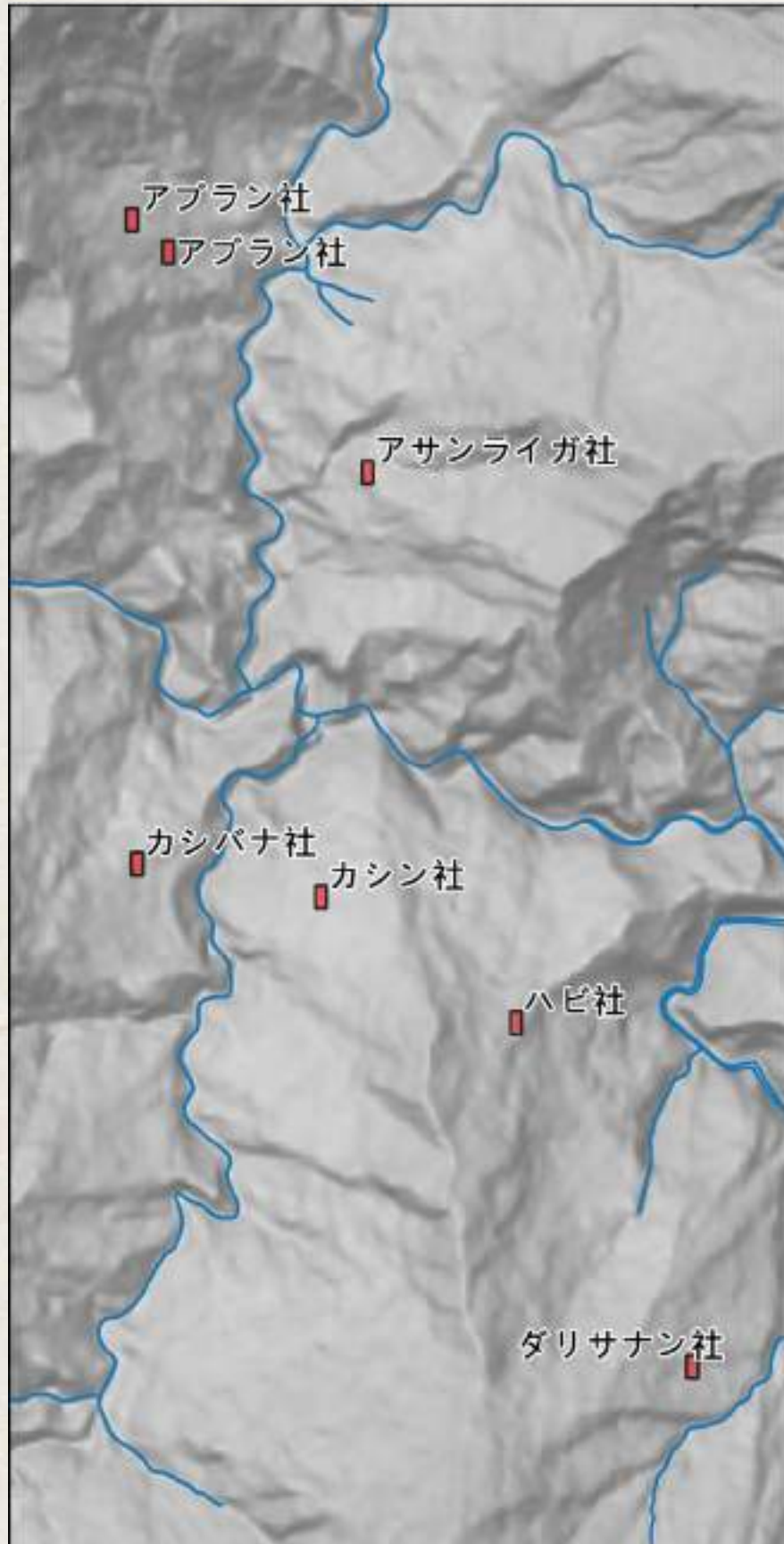




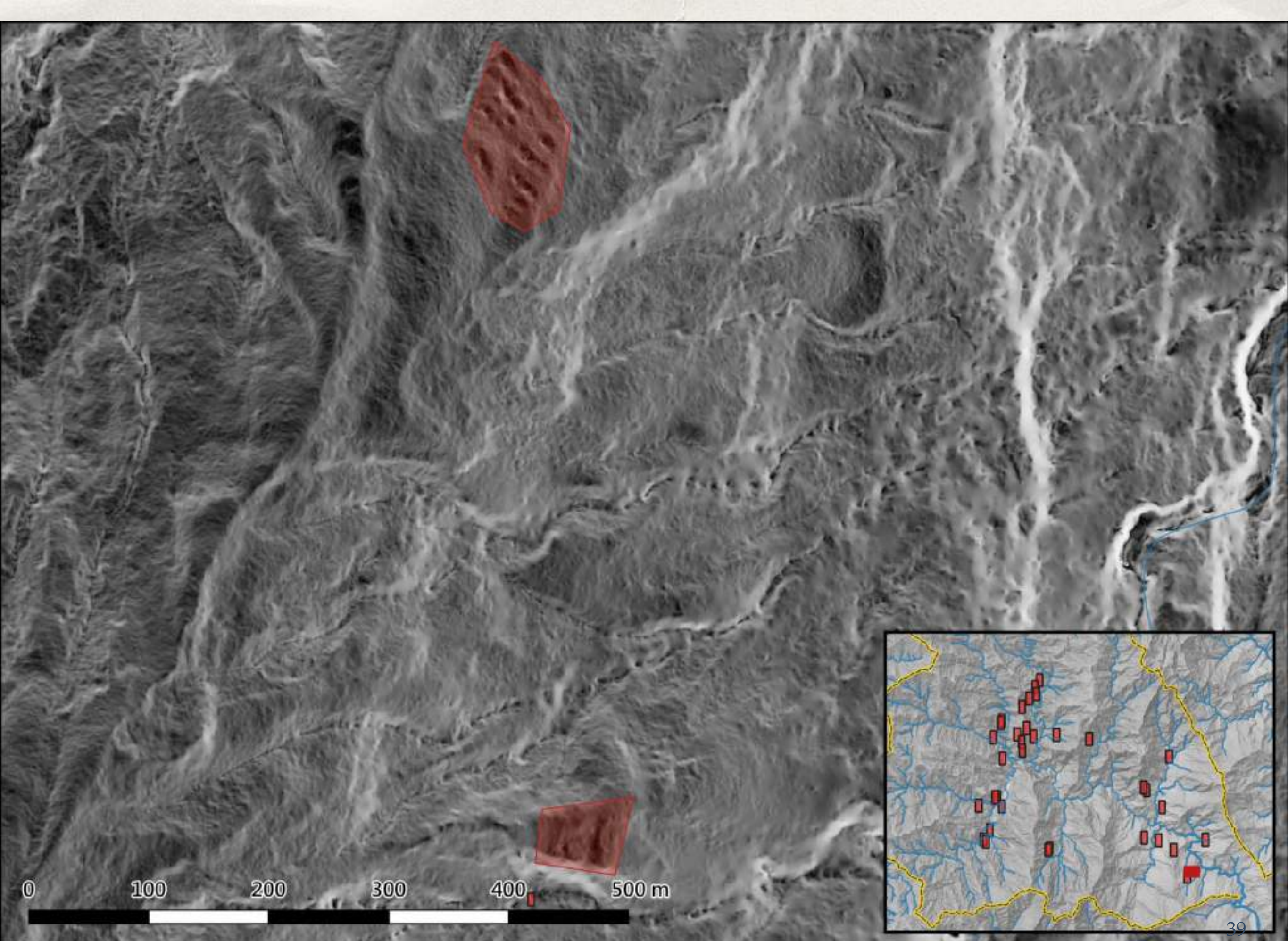




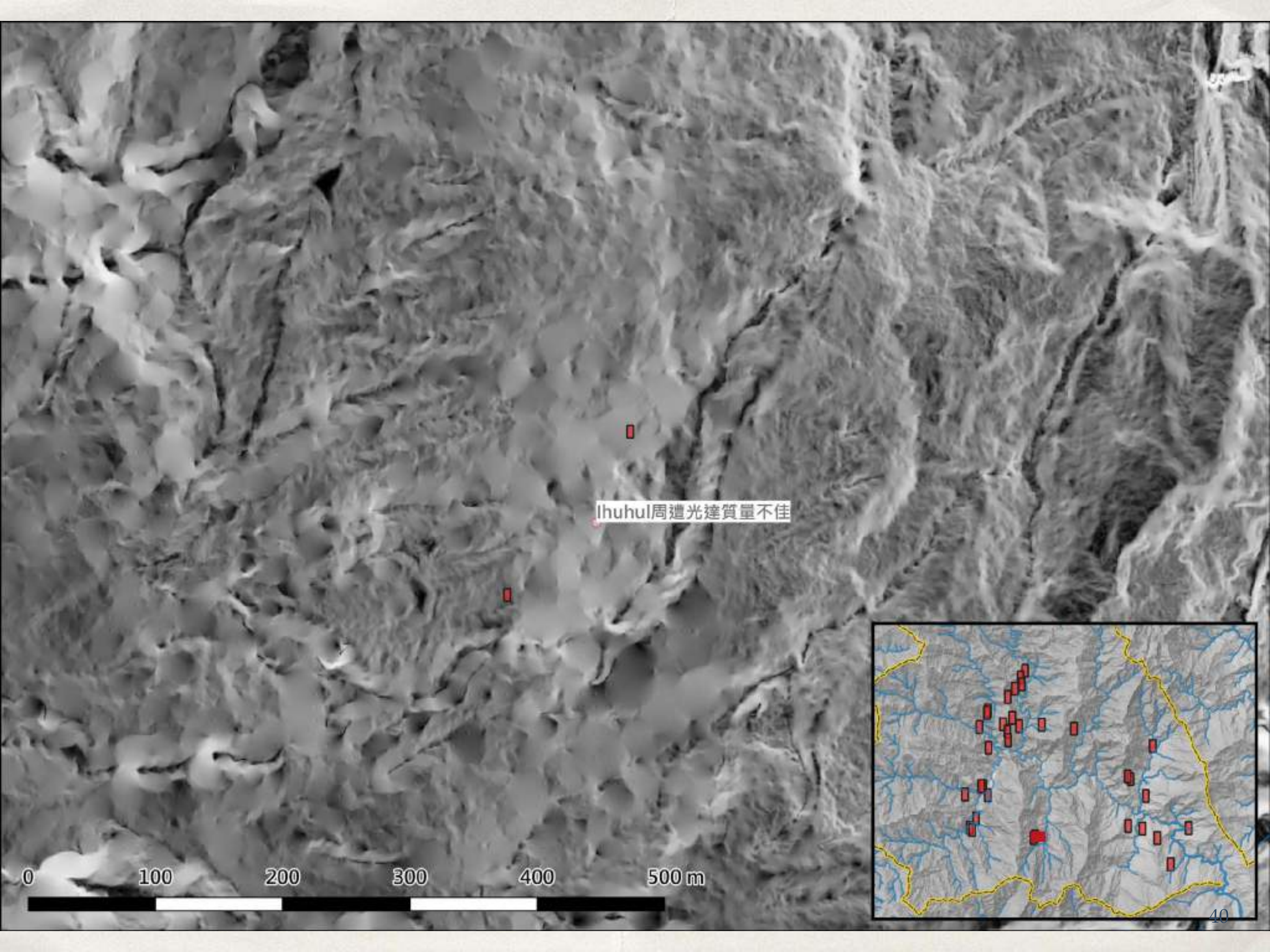
# Pinpointing Bunun Settlements







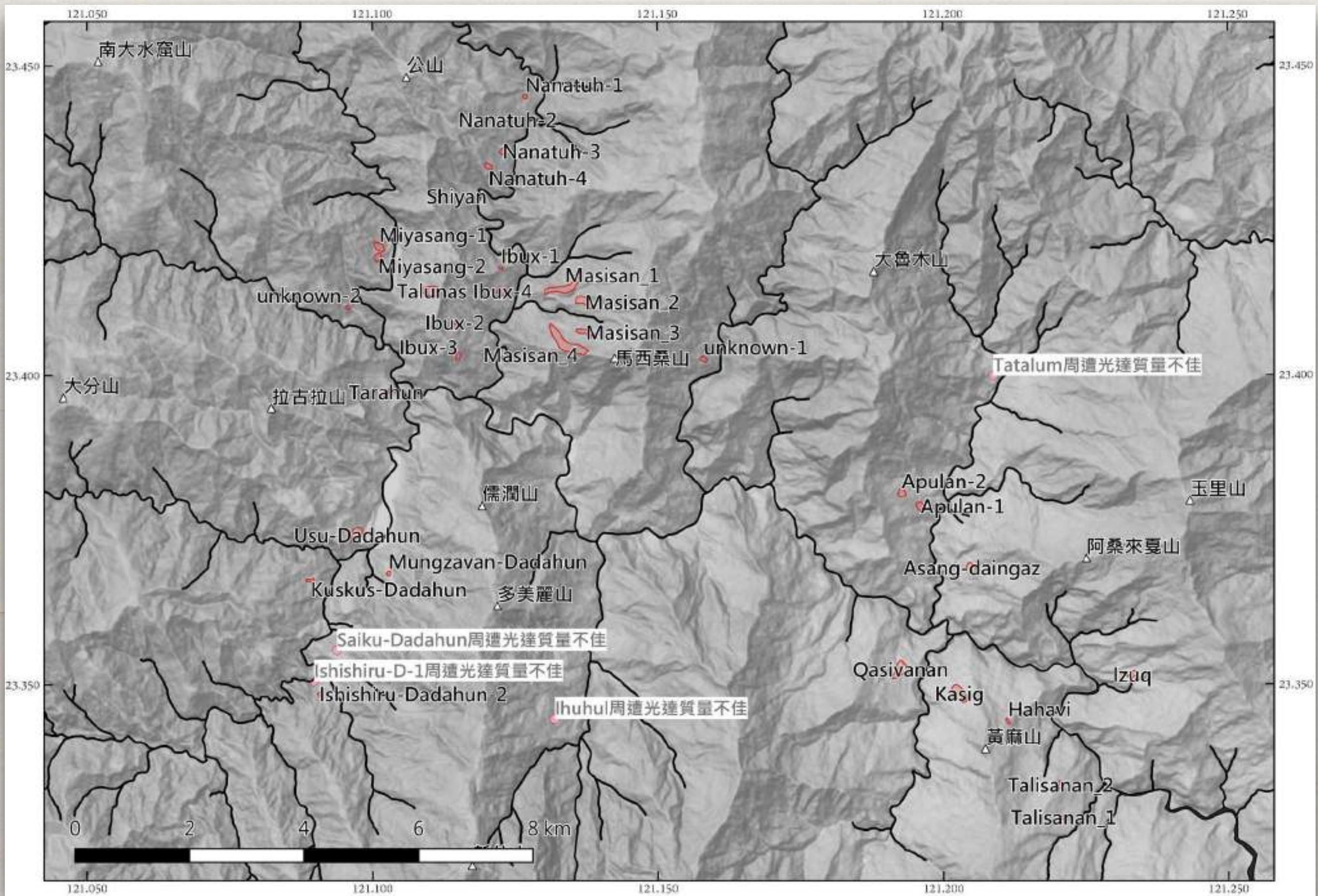




lhuhul 周遭光達質量不佳

0 100 200 300 400 500 m







2020 “Recording Our Own Home” lessons and workshops  
自己的老家自己勘



拉庫拉庫溪布農族  
舊社研究的新展望：  
自己的老家自己勘  
— 自主執行的舊部落研究

系列課程：4月-7月  
工作坊：5/1-5/3  
地點：花蓮縣卓溪鄉/玉里鎮

花蓮縣文化局指導  
中研院史語所主辦  
中研院人社中心GIS專題中心/一串小米工作室協辦

















Thank You!